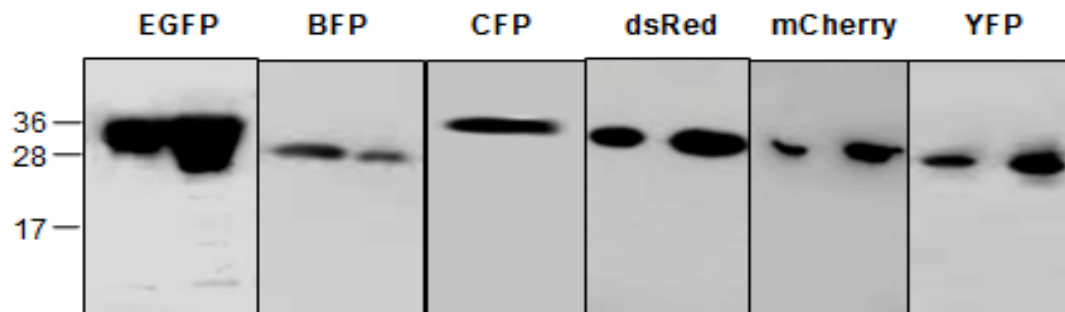
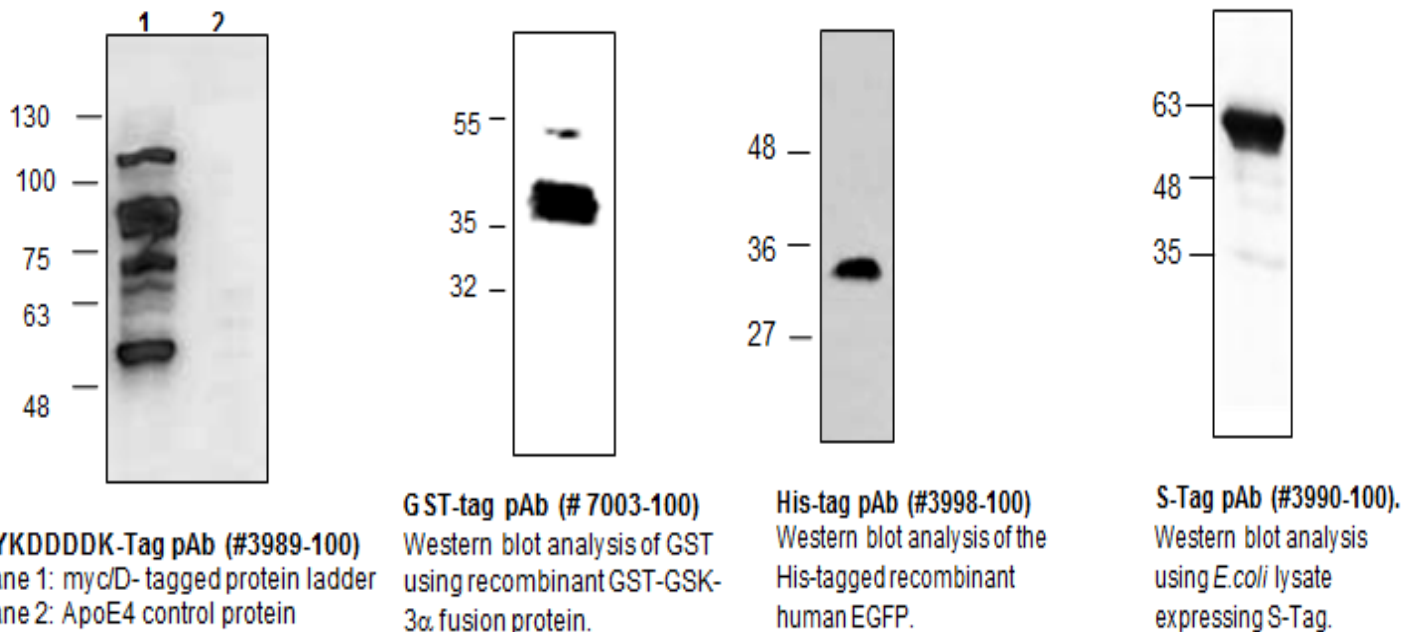


# Tag Antibodies

BioVision is pleased to announce the addition of six new tag-specific antibodies (CBP, DYKDDDDK, Strep II, T7, V5, SBP), which expands our product line to include fifteen tag-specific antibodies and six anti-fluorescent protein antibodies.

Epitope tagging is a powerful and versatile strategy in the labeling, isolation and detection of proteins and has applications in Western Blot, immunoprecipitation and immunostaining methods. Moreover, the small size of epitope-tags tends not to affect the protein's biochemical properties, while sometimes aiding in their recovery and solubility properties (e.g. GST). To utilize this feature, protein expression vectors are typically engineered with the gene of interest cloned in-frame, relative to the tag. Fusion protein detection and/or purification is mediated by highly specific antibodies to the epitope-tag, thus eliminating the need for antibodies to proteins from each newly cloned gene.

Commonly used epitope tags include glutathione-S-transferase (GST), c-myc, His-tag, DYKDDDDK (also known as FLAG®), green fluorescent protein (GFP), S-tag, influenza A virus haemagglutinin (HA), calmodulin binding protein (CBP), Streptavidin (Strep II) and the more recent T7-tag (from leader sequence of T7 bacteriophage gene10) and V5-tag (derived from P and V proteins of the paramyxovirus SV5). In addition, BioVision offers six antibodies for each of the fluorescent proteins (BFP, CFP, GFP, mCherry, RFP and YFP). [Note: FLAG® is a trademark of Sigma-Aldrich]



**Western Blot Analysis Using Recombinant Fluorescent Proteins Probed with Individual Antibodies, as Indicated Above.** EGFP (250 ng, 1  $\mu$ g); BFP (100 ng, 50 ng); CFP (100 ng, 50 ng); dsRed (10 ng, 20 ng); mCherry (10 ng, 20 ng) and YFP (10 ng, 20 ng).

155 S. Milipitas Blvd, Milipitas, CA 95035

T: 408-493-1800 F: 408-493-1801

Toll Free: 800-891-9699 (US Only)

**BioVision**  
BioVision Incorporated



## Antibodies

Product Name	Cat. No.	Size
Anti- PEG Antibody (Clone 26A04)	5019	100 µg
Anti-ADP Antibody	A1288	50 µg
Anti-cAMP Antibody	A1286	50 µg
Anti-cGMP Antibody	A1285	50 µg
Anti-HA Tag (Biotin) Antibody	A1282	50 µg
Anti-HA Tag (FITC) Antibody	A1281	50 µg
Anti-HA Tag (HRP) Antibody	A1283	50 µg
Anti-His-Tag Rabbit Monoclonal Antibody	A1138	50 µg
Anti-PEG Antibody (Clone 09F02)	5018	100 µg
Anti-Protein C Tag Antibody	A1287	50 µg
Anti-V5 epitope tag, Human IgG1 Antibody	A1103	200 µg
BFP Antibody	5994	30 µg, 100 µg
CBP-Tag Antibody	3960	30 µg, 100 µg
CBP-Tag Blocking Peptide	3960BP	50 µg
CFP Antibody	5986	30 µg, 100 µg
c- Myc Tag Antibody	3995	30 µg, 100 µg
D-Tag Antibody	3989	30 µg, 100 µg
DYKDDDDK Tag Antibody	3022	100 µg
Flag-Tag Monoclonal Antibody	A1030	100 µg
GFP Antibody	3999	30 µg, 100 µg
GST-Tag Antibody	3997	30 µg, 100 µg
GST-Tag Monoclonal Antibody	A1021	100 µg
HA-Tag Antibody	3996	200 µg
His-Tag Antibody	3646	100 µg
His-Tag Antibody	3998	30 µg, 100 µg
His-Tag Antibody (Clone 11E12)	6714	100 µl
His-Tag Blocking Peptide	3998BP	50 µg
His-Tag Monoclonal Antibody	A1032	100 µg
IL-12p40 Antibody	5732	30 µg, 100 µg
Maltose Binding Protein - Tag (MBP-Tag) Antibody (Clone 17D07)	6715	100 µl
mCherry Antibody	5993	30 µg, 100 µg
RFP (dsRed) Antibody	3993	30 µg, 100 µg
SBP-Tag Antibody	3986	30 µg, 100 µg
S-Tag Antibody	3990	30 µg, 100 µg
Strep-Tag Antibody	3988	30 µg, 100 µg
T7 Epitope -Tag Antibody	3987	30 µg, 100 µg
V5-Tag Antibody	3985	30 µg, 100 µg
YFP Antibody	3991	30 µg, 100 µg

**Please visit [www.BioVision.com](http://www.BioVision.com) for a comprehensive overview on our products!**