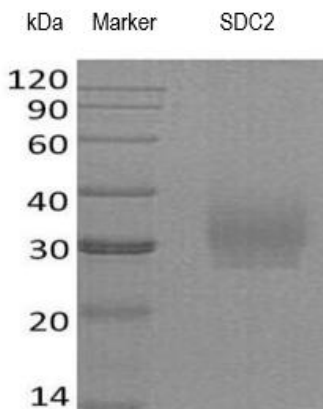


Active Syndecan-2/SDC2, Human Recombinant 07/21

CATALOG NO:	P1739-10 10 µg P1739-50 50 µg
ALTERNATE NAMES:	Fibroglycan; SYND2; Heparan Sulfate Proteoglycan 1, Cell Surface-Associated; CD362; HSPG1
MOL. WT.	15.0 kDa (predicted); 32 kDa (observed)
NCBI GENE ID:	6383
ACCESSION NO.:	P34741
ENDOTOXIN:	< 1.0 EU per µg as determined by the LAL method
PURITY:	> 95% by SDS-PAGE
SOURCE:	Human cells
AMINO ACID SEQUENCE:	Glu 19 to Glu 144 with C-terminal 6xHis Tag
BIOLOGICAL ACTIVITY:	Immobilized human basic FGF at 2 µg/ml (100 µl/well) binds Active Syndecan-2/SDC2 with ED50 of 645 ng/ml
FORM:	Lyophilized powder
FORMULATION:	Lyophilized from a 0.2 µm filtered solution of 20 mM Tris-Citrate, 150 mM NaCl, pH 7.0
STORAGE CONDITIONS:	Store lyophilized protein at -20 °C or -80 °C. Upon reconstitution, protein is stable for up to three months at -20 °C. Avoid repeated freeze-thaw cycles
DESCRIPTION:	Syndecan-2 (SDC2) is a transmembrane heparan sulfated proteoglycan that mediates cell binding, cell signaling, and cytoskeletal organization. SDC2 functions in cell proliferation, cell migration, and cell-matrix interactions. Aberrant SDC2 expression has been observed in several tumor types.



Active Syndecan-2 / SDC2, Human Recombinant was loaded on SDS-PAGE and visualized by Coomassie blue stain.

RELATED PRODUCTS:

Syndecan-1 Antibody (Cat. No. 3643R)
 FGF-2/FGF-basic, Murine Recombinant (Cat. No. 4038)
 Syndecan-3 Antibody (Cat. No. 3824)
 Syndecan-4 Antibody (Cat. No. 3644)
 FGF-2/FGF-basic, Human Recombinant (Cat. No. 4037)
 Human CellExp™ Syndecan-1 Protein (Cat. No. 7879)

FOR RESEARCH USE ONLY! Not to be used on humans.