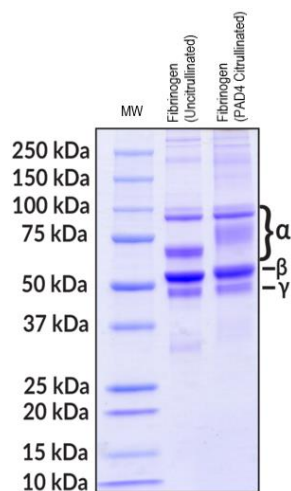


# Human Fibrinogen (PAD4 Citrullinated) 03/21

<b>CATALOG NO:</b>	P1719-50     50 µg P1719-100    100 µg
<b>ALTERNATE NAMES:</b>	Fib2; FGA; HEL-S-78p; FGB; FGG
<b>MOL. WT.</b>	Three fibrinogen proteins: $\alpha$ - 2 isoforms at 95 kDa and 69.8 kDa; $\beta$ - 55.9 kDa; $\gamma$ - 51.5 kDa
<b>NCBI GENE ID:</b>	$\alpha$ - 2243; $\beta$ - 2244; $\gamma$ - 2266
<b>ACCESSION NO.:</b>	$\alpha$ - P02671; $\beta$ - P02675; $\gamma$ - P02679
<b>PURITY:</b>	≥ 95% by SDS-PAGE
<b>SOURCE:</b>	Human plasma
<b>FORM:</b>	Liquid protein
<b>FORMULATION:</b>	In 50 mM Tris-HCl, pH 7.4, 150 mM sodium chloride
<b>STORAGE CONDITIONS:</b>	Upon receipt, divide into smaller aliquots and store at -80 °C. Prior to re-use, to avoid clotting, thaw aliquot slowly on ice. Avoid repeated freeze-thaw cycles.
<b>DESCRIPTION:</b>	Fibrinogen is a glycoprotein complex composed of three different polypeptides ( $\alpha$ , $\beta$ , $\gamma$ ) that is cleaved by thrombin to form an insoluble fibrin matrix that acts as a plasma clotting factor. Cleavage products of fibrinogen and fibrin regulate cell adhesion and activate chemotaxis. Chronic inflammation can induce protein arginine deiminases (such as PAD2 and PAD4) to citrullinate fibrinogen, which has been associated with auto-antibodies in rheumatoid arthritis.
<b>INFECTIOUS DISEASE TESTING:</b>	Purified from human plasma that tested negative for HBsAg and for antibodies to HIV and HCV; citrullinated with human recombinant PAD4



5 µg of native human fibrinogen was loaded on SDS-PAGE under reducing conditions and visualized by Coomassie blue stain. The uncitrullinated fibrinogen is compared to the fibrinogen that was citrullinated by human recombinant PAD4 enzyme.

## RELATED PRODUCTS:

Fibrinogen (Plasminogen Depleted), Human Plasma (Cat. No. 7692)  
 Fibrinogen (Pg & vWF Depleted), Human Plasma (Cat. No. 7693)  
 Fibrinogen (Pg, Fn & vWF Depleted), Human Plasma (Cat. No. 7694)  
 PAD2 Polyclonal Antibody (Cat. No. A2312P)  
 PAD4 Polyclonal Antibody (Cat. No. A2314P)

**FOR RESEARCH USE ONLY! Not to be used on humans.**