

# Human TPD52L1

01/21

<b>CATALOG NO:</b>	P1646-20 20 µg P1646-50 50 µg
<b>ALTERNATE NAMES:</b>	Tumor protein D53; TPD53; hD53; Tumor protein D52-like 1; Tumor protein D52-like 1 isoform 4
<b>MOL. WT.</b>	16.8 kDa
<b>ACCESSION NO:</b>	Q16890, NP_001003397.1
<b>PURITY:</b>	≥ 90% by SDS-PAGE
<b>SOURCE:</b>	<i>E.coli</i>
<b>TAG:</b>	His-tag
<b>AMINO ACID SEQUENCE:</b>	The target protein is expressed with the sequence (aa 1-131) of human TPD52L1 fused to His-tag at the N-terminus.
<b>FORM:</b>	Liquid
<b>FORMULATION:</b>	In Phosphate-Buffered Saline (pH 7.4).
<b>STORAGE CONDITIONS:</b>	Divide into small aliquots and store at -20 °C or -80 °C. Avoid repeated freeze-thaw cycles.
<b>DESCRIPTION:</b>	TPD52L1 is a member of tumor protein D52 gene family and overexpressed in human breast carcinoma. This protein contains a coiled-coil motif, which is responsible for homo- and heteromeric interaction, and may be a regulator of cell proliferation and calcium-mediated signal transduction.
<b>AMINO ACID SEQUENCE:</b>	<MGSSHHHHH SSGLVPRGSH> MEAQAQGLLE TEPLQGTDED AVASADFSSM LSEEEKEELK AELVQLEDEITTLRQVLSAK ERHLVEIKQK LGMNLMNELK QNFSKSWHDM QTTTAYKKTH ETLSHAGQKA TAAFSNVGTA ISKKFGDMRR K

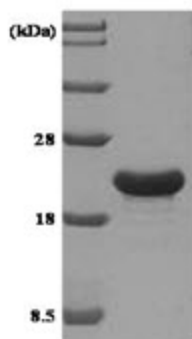


Fig A. 3 µg of human TPD52L1 protein was loaded on SDS-PAGE under reducing conditions and visualized by Coomassie blue stain.

## RELATED PRODUCTS:

S100B, human recombinant (Cat. No. P1035)  
 Human S100A11 (Cat. No. P1618)  
 Human Recombinant Gamma-Synuclein (Cat. No. P1613)  
 Human CellExp™ Beta 2 Microglobulin (Cat. No. P1611)  
 CA 19-9, Human Liver Cat. No. P1437)

**FOR RESEARCH USE ONLY! Not to be used on humans.**