

# BCL-2 Protein, Human Recombinant

12/20

<b>CATALOG NO:</b>	P1627-20    20 µg P1627-50    50 µg
<b>ALTERNATE NAMES:</b>	Protein phosphatase 1; Regulatory subunit 50; BCL-XL; BCL2 apoptosis regulator; B - cell CLL/lymphoma 2; PPP1R50
<b>MOL. WT.</b>	25 kDa
<b>ACCESSION NO:</b>	P10415, NP_000624.2
<b>PURITY:</b>	≥ 95% by SDS-PAGE
<b>SOURCE:</b>	<i>E.coli</i>

**AMINO ACID SEQUENCE:** The target protein is expressed with the sequence (Ala2-Asp211) of human BCL-2.

**FORM:** Liquid

**FORMULATION:** In 20 mM Tris, 200 mM NaCl, 30% Glycerol, 1 mM DTT, pH 8.0

**STORAGE CONDITIONS:** Divide into small aliquots and store at -20 °C or -80 °C. Avoid repeated freeze-thaw cycles. This product is stable at ≤ -70° C for up to 1 year from the date of receipt.

**DESCRIPTION:** BCL-2 was the first anti-death gene discovered with far reaching implications in tumor biology. It regulates cell death by either inhibiting (anti-apoptotic) or inducing (pro-apoptotic) apoptosis. The BCL-2 protein is the founding member of the BCL-2 family of apoptosis regulators and was the first apoptosis modulator to be associated with cancer. It suppresses apoptosis in a variety of cell systems including factor-dependent lymphohematopoietic and neural cells. BCL-2 regulates cell death by controlling the mitochondrial membrane permeability.

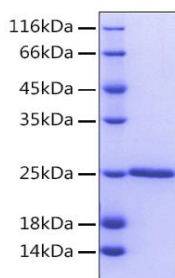


Fig A. Recombinant Human BCL2 Protein was loaded on SDS-PAGE under reducing conditions and visualized with Coomassie Blue. The protein migrates as a band at 25 kDa in SDS-PAGE.

## RELATED PRODUCTS:

DiscoveryPak™ Bcl2 Inhibitors Set (Cat No. S229)  
 Bcl-2 Antibody (Cat No. 3033)  
 Phospho-Bcl-2 (Ser70) Antibody (Cat No. A1011)  
 Bcl-2 Blocking Peptide (Cat No. 3033BP)  
 BCL-2 Inhibitor, ABT-199 (Cat No. 2253)

**FOR RESEARCH USE ONLY! Not to be used on humans.**