

Human Beta-Catenin

12/20

CATALOG NO:	P1626-20 20 µg P1626-50 50 µg
ALTERNATE NAMES:	Catenin beta-1; CTNNB1; CTNNB
MOL. WT.	The protein migrates as a ~100-110 kDa band in SDS-PAGE.
ACCESSION NO:	P35222-1, XP_016861227.1
PURITY:	≥ 92% by SDS-PAGE
SOURCE:	<i>E.coli</i>
ENDOTOXIN:	< 0.1 EU/µg of the protein as determined by LAL method.
TAG:	His Tag
AMINO ACID SEQUENCE:	The target protein is expressed with the sequence (aa Met1-Leu781) of human Beta-Catenin protein fused to 6xHis tag at the C-terminus.
FORM:	Liquid
FORMULATION:	In 0.22 µm filtered solution of 20 mM Hepes, 150 mM NaCl, 10% Glycerol, 5 mM DTT, pH 7.5.
STORAGE CONDITIONS:	Divide into small aliquots and store at -80 °C. Avoid repeated freeze-thaw cycles.
DESCRIPTION:	Beta-catenin is a key downstream component of the canonical Wnt signaling pathway. β-catenin associates with E-cadherin and is involved in regulation of cell adhesion. Stimulation of Wnt pathway can trigger nuclear translocation of β-catenin. Over expression of β-catenin occurs in various cancers such as colorectal, lung, malignant breast tumor, hepatocellular carcinoma and it can be used as a tumor biomarker.

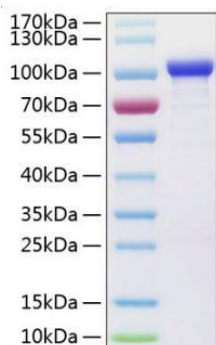


Fig A. Recombinant Beta-Catenin protein was loaded on SDS-PAGE and visualized by Coomassie blue stain. The protein migrates as a ~100-110 kDa band in SDS-PAGE.

RELATED PRODUCTS:

WNT-1, human recombinant (Cat. No. 4754)
 Human Recombinant Gamma-Synuclein (Cat. No. P1613)
 Anti-Catenin, beta Antibody (CTNNB1/1507) (Cat. No. A1467)
 Human CellExp™ Beta 2 Microglobulin (Cat. No. P1611)
 Human CellExp™ E-Cadherin /ECAD /Cadherin-1/CD324 Protein, human recombinant (Cat. No. 7420)

FOR RESEARCH USE ONLY! Not to be used on humans.