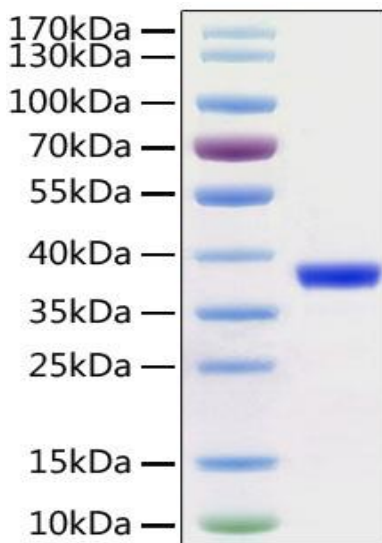


# Recombinant SARS-CoV-2 3C-like Proteinase

<b>CATALOG NO:</b>	P1550-10 10 µg P1550-50 50 µg
<b>ALTERNATE NAMES:</b>	M Proteinase, 3CL Proteinase, 3CL-Mpro, 3C-like main protease
<b>MOL. WT.</b>	38 kDa (6xHis, Avi tag at the N-terminus)
<b>SOURCE:</b>	<i>E.coli</i>
<b>PURITY:</b>	>95% SDS - PAGE
<b>ENDOTOXIN:</b>	< 1.0 EU/µg of the protein by LAL method.
<b>FORM:</b>	Liquid
<b>FORMULATION:</b>	Supplied as a 0.22 µm filtered solution in 20mM HEPES, 120mM NaCl, 10% Glycerol, 2mM TCEP,pH7.4
<b>STORAGE CONDITIONS:</b>	Aliquot and store at -80°C.Avoid repeated freeze-thaw cycles.
<b>DESCRIPTION:</b>	The viral main proteinase (M pro , also called 3CL pro ), which controls the activities of the coronavirus replication complex. It functions as a cysteine protease engaging in the proteolytic cleavage of the viral precursor polyprotein to a series of functional proteins required for coronavirus replication and is considered as an appealing target for designing anti-SARS agents.
<b>AMINO ACID SEQUENCE:</b>	aa 1-306 (Ser1 - Gln306)



SDS-PAGE of Recombinant 3C-like Proteinase

## RELATED PRODUCTS:

- Human CellExp™ Coronavirus Spike Protein (MERS-CoV S1; 18-725), Recombinant (P1513)
- Human CellExp™ Coronavirus Spike Protein (SARS-CoV-2; S1), Recombinant (P1524)
- Human CellExp™ SARS-CoV-2 Spike Protein (RBD), Recombinant (P1530)
- Recombinant Bovine Coronavirus Hemagglutinin-esterase (HE) (P1527)
- Human CellExp™ Angiotensin-Converting Enzyme 2 (ACE2), Human Recombinant (P1535)

**FOR RESEARCH USE ONLY! Not to be used on humans.**