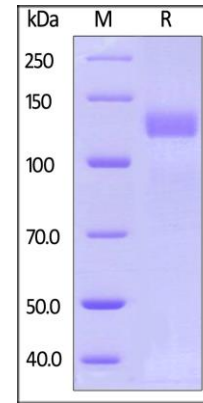


Human CellExp™ Her2 / ErbB2, Fc Tag, Human Recombinant

CATALOG NO:	P1346-10	10 µg
	P1346-50	50 µg
ALTERNATE NAMES:	ERBB2, CD340, HER-2/neu, HER2, MLN19, NEU, NGL, TKR1	
SOURCE:	HEK 293 cells (Thr 23 - Thr 652)	
PURITY:	> 95% by SDS – PAGE	
MOL. WEIGHT:	This protein carries a human IgG1 Fc tag at the C-terminus. The protein has a calculated MW of 96.0 kDa. The protein migrates as 125-140 kDa under reducing (R) condition (SDS-PAGE) due to glycosylation.	
ENDOTOXIN LEVEL:	< 1.0 EU per 1µg of protein (determined by LAL method)	
FORM:	Lyophilized	
FORMULATION:	Lyophilized from 0.22 µm filtered solution in PBS, pH7.4. Generally Trehalose is added as a protectant before lyophilization.	
STORAGE CONDITIONS:	Store at -20°C. After reconstitution, aliquot and store at -80°C and use within 3 months. Avoid repeated freezing and thawing cycles.	
RECONSTITUTION:	Centrifuge the vial prior to opening. Reconstitute in sterile deionized water to a concentration of 50 µg/ml. Solubilize for 30 to 60 minutes at room temperature with occasional gentle mixing. Carrier protein (0.1% (W/V) HSA or BSA) is recommended for further dilution and long term storage. Do not vortex.	
DESCRIPTION:	Human Epidermal growth factor Receptor 2 (HER2) is also called ERBB2, HER-2,HER-2 /neu, NEU, NGL,TKR1 and c-erb B2,and is a protein giving higher aggressiveness in breast cancers. It is a member of the ErbB protein family, more commonly known as the epidermal growth factor receptor family. HER2 is a cell membrane surface-bound receptor tyrosine kinase and is normally involved in the signal transduction pathways leading to cell growth and differentiation. HER2 is thought to be an orphan receptor, with none of the EGF family of ligands able to activate it. Approximately 30% of breast cancers have an amplification of the HER2 gene or overexpression of its protein product. Overexpression of this receptor in breast cancer is associated with increased disease recurrence and worse prognosis. HER2 appears to play roles in development, cancer,communication at the neuromuscular junction andregulation of cell growth and differentiation.	
SPECIFIC ACTIVITY:	Immobilized Human Her2, Fc Tag at 0.05 µg/mL (100 µL/well) can bind Trastuzumab with a linear range of 0.39-6.25 ng/mL	

A



B

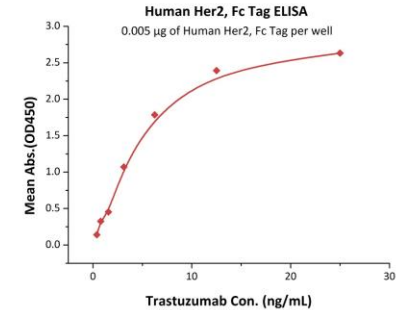


Fig. A. Human Her2, Fc Tag on SDS-PAGE under reducing (R) condition.

Fig. B. Immobilized Human Her2, Fc Tag at 0.05 µg/mL (100 µL/well) can bind Trastuzumab with a linear range of 0.39-6.25 ng/mL

RELATED PRODUCT:

- Human CellExp™ ErbB2 / HER2 / CD340, human recombinant (Cat. No. 7397)
- HER2, Active, Human Recombinant (Cat. No. 8011)
- HER2/ErbB2 (Human) ELISA Kit (Cat. No. E4357)
- Anti- Her2/Neu Antibody (IHC002) (Cat. No. A1519)
- Anti-HER2 (Trastuzumab), humanized Antibody (Cat. No. A1046)
- Anti-HER2 (c-erbB-2), Rabbit Monoclonal Antibody (Cat. No. A1134)
- HER2, Active (Cat. No. 7762)
- Human CellExp™ Her2/ErbB2, Extracellular Domain (ED), Human Recombinant (Cat. No. P1160)

FOR RESEARCH USE ONLY! Not to be used on humans.