

# Human CellExp™ EGFR/ErbB1, Rhesus macaque Recombinant

**CATALOG NO:** P1338-10 10 µg  
P1338-50 50 µg

**ALTERNATE NAMES:** EGFR, ERBB, ERBB1, HER1, PIG61, mENA

**SOURCE:** HEK 293 cells (Leu 25 - Ser 645)

**PURITY:** >95% by SDS – PAGE

**MOL. WEIGHT:** This protein carries polyhistidine tag at the C-terminus. The protein has a calculated MW of 70.5 kDa. The protein migrates as 110-115 kDa under reducing (R) condition (SDS-PAGE) due to Glycosylation.

**ENDOTOXIN LEVEL:** < 1.0 EU per 1µg of protein (determined by LAL method)

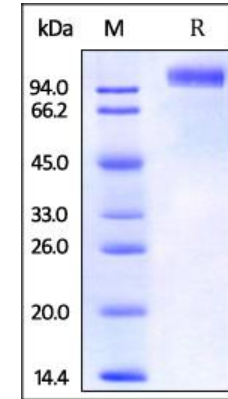
**FORM:** Lyophilized

**FORMULATION:** Lyophilized from 0.22 µm filtered solution in PBS, pH7.4. Generally Mannitol or Trehalose is added as a protectant before lyophilization.

**STORAGE CONDITIONS:** Store at -20°C. After reconstitution, aliquot and store at -80°C and use within 3 months. Avoid repeated freezing and thawing cycles.

**RECONSTITUTION:** Centrifuge the vial prior to opening. Reconstitute in sterile deionized water to a concentration of 50 µg/ml. Solubilize for 30 to 60 minutes at room temperature with occasional gentle mixing. Carrier protein (0.1% (W/V) HSA or BSA) is recommended for further dilution and long term storage. Do not vortex.

**DESCRIPTION:** The epidermal growth factor receptor (EGFR; ErbB-1; HER1 in humans) is the cell-surface receptor for members of the epidermal growth factor family (EGF-family) of extracellular protein ligands. The epidermal growth factor receptor is a member of the ErbB family of receptors, a subfamily of four closely related receptor tyrosine kinases: EGFR (ErbB-1), HER2/c-neu (ErbB-2), Her 3 (ErbB-3) and Her 4 (ErbB-4). Mutations affecting EGFR expression or activity could result in cancer.



Rhesus macaque EGF R, His Tag on SDS-PAGE under reducing (R) condition

**RELATED PRODUCT:**

- Human CellExp™ HER1/ErbB1, human recombinant (**Cat. No. 7396**)
- Human CellExp™ HER2/ErbB2, human recombinant (**Cat. No. 7397**)
- Human CellExp™ HER3/ErbB3, human recombinant (**Cat. No. 7400**)
- Human CellExp™ HER4/ErbB4, human recombinant (**Cat. No. 7401**)
- EGF Receptor, human recombinant (**Cat. No. 7135**)
- ErbB4/HER4 (His Tagged), Human Recombinant (**Cat. No. 7773**)
- HER2, Active (**Cat. No. 7762**)
- HER2/ErbB2 Antibody (**Cat. No. 3783**)

**FOR RESEARCH USE ONLY! Not to be used on humans.**