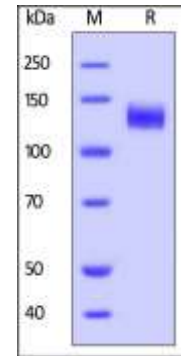


## Human CellExp™ EGFR/ErbB1, Fc Tag, Human Recombinant

<b>CATALOG NO:</b>	P1337-10	10 µg
	P1337-50	50 µg
<b>ALTERNATE NAMES:</b>	EGFR, ERBB, ERBB1, HER1, PIG61, mENA	
<b>SOURCE:</b>	HEK 293 cells (Leu 25 - Ser 645)	
<b>PURITY:</b>	>95% by SDS – PAGE	
<b>MOL. WEIGHT:</b>	This protein carries IgG1 Fc tag at the C-terminus. The protein has a calculated MW of 95 kDa. The protein migrates as 130-140 kDa under reducing (R) condition (SDS-PAGE) due to Glycosylation.	
<b>ENDOTOXIN LEVEL:</b>	< 1.0 EU per 1µg of protein (determined by LAL method)	
<b>FORM:</b>	Lyophilized	
<b>FORMULATION:</b>	Lyophilized from 0.22 µm filtered solution in PBS, pH7.4. Generally Mannitol or Trehalose is added as a protectant before lyophilization.	
<b>STORAGE CONDITIONS:</b>	Store at -20°C. After reconstitution, aliquot and store at -80°C and use within 3 months. Avoid repeated freezing and thawing cycles.	
<b>RECONSTITUTION:</b>	Centrifuge the vial prior to opening. Reconstitute in sterile deionized water to a concentration of 50 µg/ml. Solubilize for 30 to 60 minutes at room temperature with occasional gentle mixing. Carrier protein (0.1% (W/V) HSA or BSA) is recommended for further dilution and long term storage. Do not vortex.	
<b>DESCRIPTION:</b>	The epidermal growth factor receptor (EGFR; ErbB-1; HER1 in humans) is the cell-surface receptor for members of the epidermal growth factor family (EGF-family) of extracellular protein ligands. The epidermal growth factor receptor is a member of the ErbB family of receptors, a subfamily of four closely related receptor tyrosine kinases: EGFR (ErbB-1), HER2/c-neu (ErbB-2), Her 3 (ErbB-3) and Her 4 (ErbB-4). Mutations affecting EGFR expression or activity could result in cancer.	
<b>SPECIFIC ACTIVITY:</b>	Immobilized Human FGF basic, Tag Free at 0.5 µg/mL (100 µL/well) can bind Cynomolgus Glypican 3, His Tag with a linear range of 1-20 ng/mL.	

A



B

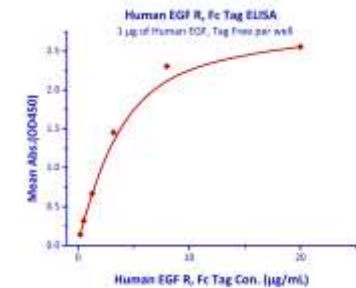


Fig. A. Human EGF R, Fc Tag on SDS-PAGE under reducing (R) condition

Fig. B. Immobilized Human EGF, Tag Free at 10µg/mL (100 µL/well) can bind Human EGF R, Fc Tag with a linear range of 0.2-3.2 µg/mL

### RELATED PRODUCT:

- Human CellExp™ HER1/ErbB1, human recombinant (**Cat. No. 7396**)
- Human CellExp™ HER2/ErbB2, human recombinant (**Cat. No. 7397**)
- Human CellExp™ HER3/ErbB3, human recombinant (**Cat. No. 7400**)
- Human CellExp™ HER4/ErbB4, human recombinant (**Cat. No. 7401**)
- EGF Receptor, human recombinant (**Cat. No. 7135**)
- ErbB4/HER4 (His Tagged), Human Recombinant (**Cat. No. 7773**)
- HER2, Active (**Cat. No. 7762**)
- HER2/ErbB2 Antibody (**Cat. No. 3783**)

**FOR RESEARCH USE ONLY! Not to be used on humans.**