

BioVision Complement C5, Human Plasma

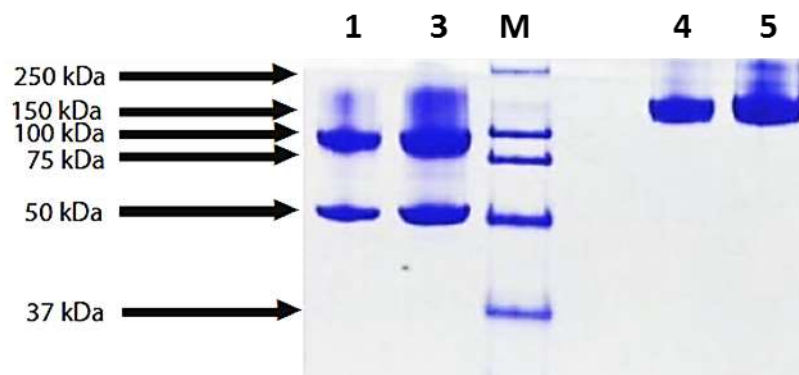
03/18

For research use only

CATALOG #:	P1273-25 P1273-100	25 µg 100 µg
SOURCE:	Human plasma (Prepared from plasma shown to be non-reactive for HBsAg, anti-HCV, anti-HBc, and negative for anti-HIV 1 & 2 by FDA approved tests.	
MOL. WEIGHT:	190.0 kDa	
PURITY:	≥95% by SDS-PAGE	
FORM:	Liquid	
FORMULATION:	In PBS, pH 7.4	

STORAGE CONDITIONS:
At -80 C. Avoid freeze thaw cycles.

DESCRIPTION:
Complement Component 5 (C5) plays a central role in inflammatory and cellular death processes. This protein is composed of alpha and beta polypeptide chains that are linked by a disulfide bridge. The protein gets cleaved into C5a and C5b which are subsequently responsible for chemotaxis, inflammation, and initiating the formation of the membrane attack complex (MAC). Drugs that inhibit complement C5 have been used in Paroxysmal nocturnal hemoglobinuria (PNH) patients to lessen thrombotic complications by lessening intravascular hemolysis.



SDS-PAGE: 4-12% Bis-Tris NuPAGE gel, Lanes 1-3: 5,10,20mg (Reduced/Heat); Lane M: Marker; Lanes 4-6: 5, 10, 20mg (Non-reduced/No heat)

RELATED PRODUCTS

- C5a, human recombinant (**4995B-20, -100, -1000**)
- C5a (His-Tag), murine recombinant (**4895A-20, -100, -1000**)
- C5a Antibody (**5995-30T, -100**)
- C5a Antibody (**5895-30T, -100**)
- C3aR Antibody (**5543-100**)
- C1 Inhibitor, Human Recombinant (**7120-50, -200**)
- C1 Esterase inhibitor, Human Plasma (**7299-1000**)
- Complement C3c, Human Plasma (**P1271-500, -1000**)
- Complement C4c, Human Plasma (**P1272-500, -1000**)

FOR RESEARCH USE ONLY! Not to be used in humans.