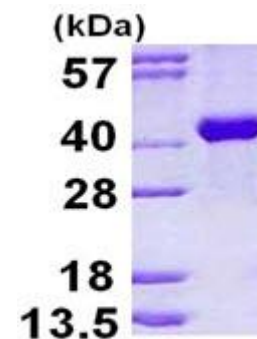


ALDOB, human recombinant

CATALOG NO:	P1157-10 10 µg P1157-50 50 µg
ALTERNATE NAMES:	Fructose-bisphosphate aldolase B, ALDB, ALDO2
CONCENTRATION:	1 mg/ml (determined by Bradford assay)
SOURCE:	<i>E.coli</i> (1-364aa)
PURITY:	> 95% by SDS-PAGE
MOL. WEIGHT:	This protein is fused with 6x His tag at N terminus and the protein has a calculated MW of 42 kDa (388aa)
FORM:	Liquid
FORMULATION:	In 20 mM Tris-HCl buffer (pH 8.0) containing 1 mM DTT, 10% glycerol, 0.1 M NaCl
STORAGE CONDITIONS:	Store at +4°C for short term (1-2 weeks). For long term storage, aliquot and store at -70°C. Avoid repeated freeze/thaw cycles.
SEQUENCE:	<pre> MGSSHHHHH SSGLVPRGSH MGS DSSINQSIGG VILFHETLYQ KDSQGKLF RN ILKEKGIVVG IKLDQGGAPL AGTNKETTIQ GLDGLSERCA QYKKDGVDFG KWRAVLR IAD QCPSSLAIQE NANALARYAS ICQQNGLVPI VEPEVIPDGD HDLEHCQYVT EKVLAAVYKA LNDHHVYLEG TLLKPNMVTA GHACTKKYTP MAHRFP ALTQEKKEL SEIAQSIVAN GKGILAADES VGTMGNRLQR IKVENTEENR RQFREILFSV EQVAMATVTA LHRTVPAAVP GICFLSGGMS EEDATLNLNA INLCPLPKPW KLSFSYGRAL QASALAAWGG KANKEATQE AFMKRAMANC QAAKGQYVHT GSSGAASTQS LFTACYTY </pre>
DESCRIPTION:	Fructose-bisphosphate aldolase B, also known as ALDOB, is one of three known aldolase isoenzymes, and is found in kidney and small adult intestine where it is associated with aldolases A or C. ALDOB catalyzes the reversible cleavage of fructose 1-phosphate into dihydroxyacetone phosphate and glyceraldehyde. It is regulated by the hormones Insulin and glucagon and has been implicated in hereditary fructose intolerance disease. Recombinant human ALDOB protein, fused to His-tag at N-terminus, was expressed in <i>E.coli</i> and purified by using conventional chromatography techniques.



15% SDS-PAGE (3µg)

Human recombinant ALDOB

RELATED PRODUCT:

- PKD2, Active (Cat. No. 7711-5)
- PAK4, Active (Cat. No. 7707-5)
- Human Recombinant ALDH2 (Cat. No. 6322-100)
- Human Recombinant PKM2 (Cat. No. 6372-100)
- Phosphogluconate dehydrogenase, human recombinant (Cat. No. P1051-50)
- GAPDH, Active, human recombinant (Cat. No. P1100-10, -50)

FOR RESEARCH USE ONLY! Not to be used on humans.