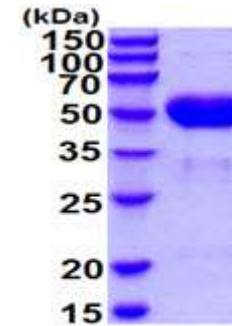


## Cathepsin A, mouse recombinant

<b>CATALOG NO:</b>	P1037-10 P1037-50	10 µg 50 µg
<b>ALTERNATE NAMES:</b>	Ctsa, Cathepsin A, AU019505, PPCA, Ppqb, lysosomal protective protein isoform b	
<b>CONCENTRATION:</b>	0.5 mg/ml (determined by Bradford assay)	
<b>SOURCE:</b>	Baculovirus	
<b>PURITY:</b>	> 90% by SDS-PAGE	
<b>MOL. WEIGHT:</b>	This protein is fused with 6x His tag at C terminus and the protein has a calculated MW of 52.4 kDa (459 aa), predicted N-terminal is Ala24. The protein migrates as 50-70 KDa in SDS-PAGE under reducing conditions.	
<b>ENDOTOXIN LEVEL:</b>	< 1.0 EU per 1µg of protein (determined by LAL method)	
<b>FORM:</b>	Liquid	
<b>FORMULATION:</b>	In Phosphate Buffered Saline (pH 7.4) containing 10% glycerol	
<b>STORAGE CONDITIONS:</b>	Store at +4°C for short term (1-2 weeks). For long term storage, aliquot and store at -70°C. Avoid repeated freeze/thaw cycles.	
<b>SEQUENCE:</b>	<p>APDQDEIDCL PGLAKQPSFR QYSGYLRASD SKHFHYWFVE  SQNDPKNSPV VLWLNNGGPGC SSLDGLLTEH GPFLIQPDGV  TLEYNPYAWN LIANVLYIES PAGVGFYSYD DKMYVTNDTE  VAENNYEALK DFFRLFPEYK DNKLFLTGES YAGIYIPTLA  VLVMQDPSMN LQGLAVGNGL ASYEQNDNSL VYFAYYHGLL  GNRLWTSLQT HCCAQNKCNF YDNKDPECVN NLEVSRIVG  KSGLNINLY APCAGGVPGR HRYEDTLVVQ DFGNIFTRLP  LKRRFPEALM RSGDKVRLDP PCTNTTAPSN YLNNPYVRKA  LHIPESLPRW DMCNFLVNLQ YRRLYQSMNS QYLKLLSSQK  YQILLYNGDV DMACNFMGDE WFDVSLNQKM EVQRRPWLV  YGESGEQVAG FVKECSHITF LTIKAGAHMV PTDKPRAAFT  MFSRFLNKEP YVEHHHHHH</p>	
<b>DESCRIPTION:</b>	<p>CTSA, also known as lysosomal protective protein isoform b, is a component of the lysosomal multienzyme complex along with beta-galactosidase and sialidase Neu1. It is a multicatalytic enzyme with deamidase and esterase in addition to carboxypeptidase activities. Recombinant mouse CTSA, fused to His-tag at C-terminus, was expressed in insect cell and purified by using conventional chromatography techniques.</p>	



15% SDS-PAGE (3µg)

### Mouse recombinant Cathepsin A

#### RELATED PRODUCT:

- CSTB, human recombinant (**Cat. No. 9235-10**)
- CST6, human recombinant (**Cat. No. 9234-10**)
- Cathepsin B, Active, human recombinant (**Cat. No. 7580-50**)
- Cathepsin D, Active, human recombinant (**Cat. No. 9229-50**)
- Cathepsin K, Active, human recombinant (**Cat. No. 7600-50**)
- Cathepsin L, human recombinant (**Cat. No. 1135-100**)
- Cathepsin S, Active, human recombinant (**Cat. No. 7526-50**)
- Human CellExp™ Cathepsin B, human recombinant (**Cat. No. 7408-10**)
- Human CellExp™ Cathepsin D, human recombinant (**Cat. No. 7409-10**)
- Human CellExp™ Cathepsin L1, human recombinant (**Cat. No. 7410-10**)
- Human CellExp™ Cathepsin S, human recombinant (**Cat. No. 7277-10**)
- Cathepsin D Activity Fluorometric Assay Kit (**Cat. No. K143-100**)
- Cathepsin B Activity Fluorometric Assay Kit (**Cat. No. K140-100**)

**FOR RESEARCH USE ONLY! Not to be used on humans.**