

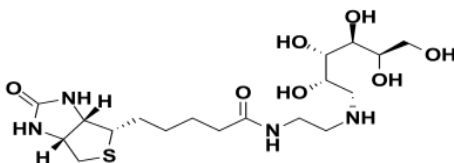
Biotin-EDA-Glucose

ALTERNATE NAME: Biotin-NH-CH₂CH₂-NH-Glucose

CATALOG#: M1439-10, 50

AMOUNT#: 10 mg, 50 mg

STRUCTURE:



MOLECULAR FORMULA: C₁₈H₃₄N₄O₇S

MOLECULAR WEIGHT: 450.55

CAS#: n/a

APPEARANCE: White to off-white solid

SOLUBILITY: H₂O (>20 mg/ml)

PURITY: ≥95%

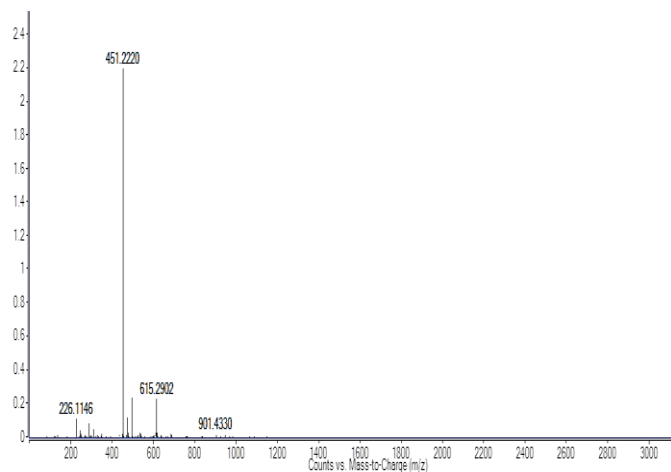
STORAGE: -20 °C. Protect from air and moisture

DESCRIPTION:

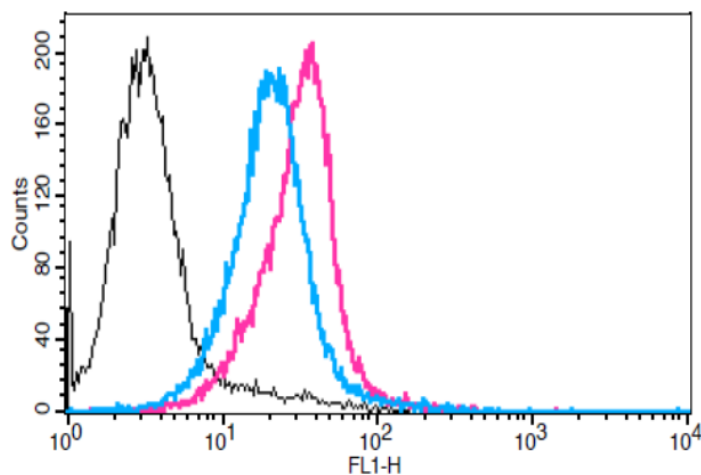
Biotin-EDA-glucose is a water-soluble biotin glucose conjugate containing ethylenediamine (EDA) as spacer arm.

KEY FEATURES:

- Ethylenediamine is used as a bifunctional linker and spacer arm to facilitate the conjugation.
- Spacer arms providing slightly different options for controlling steric hindrance and hydrophilicity
- Water-soluble; can be used under physiologic conditions



MS analysis of Biotin-EDA-Glucose



Biotin-Glc uptake by Jurkat Cells;

Pink: Biotin-Glc treatment (uptake) of the cells;
Blue: in the presence of the uptake inhibitor

RELATED PRODUCTS:

- Sulfo-SMCC (Cat. No. 2320-50, 100, 1000, 1 EA)
- Sulfo-NHS (Cat. No. 2321-500, 5G, 1 EA)
- Sulfo-NHS-Biotin (Cat. No. 2322-50, 250, 1 EA)
- Sulfo-SANPAH (Cat. No. 2324-50, 250)
- Sulfo-LC-SPDP (Cat. No. 2325-50, 250)
- Sulfo-NHS-LC-Biotin (Cat. No. 2326-50, 250, 1EA)
- BS3 Crosslinker (Cat. No. 2327-50, 250, 1000, 1EA)
- SPDP Crosslinker (Cat. No. 2328-50, 250)
- Biotin-HPDP (Cat. No. 2329-50, 250)
- Traut's Reagent (Cat. No. 2330-50, 250, 1000)
- N-Hydroxy succinimide (Cat. No. 2331-1G, 5G, 25G)
- DTSSP Crosslinker (Cat. No. 2337-50, 250)

FOR RESEARCH USE ONLY! Not to be used on humans.