

# Protocadherin 15 (Human) ELISA Kit

10/21

(Catalog # E5127-100, 96 assays; Store at 4°C)

## I. Introduction:

**Protocadherin-15** also known as PCDH15 belongs to the epsilon subfamily of non-clustered protocadherin. The cadherin family consists of a large group of cell adhesion proteins. It can be classified into three subfamilies: classical cadherins, desmosomal cadherins and protocadherins (PCDHs). Protocadherin 15 is a component of the tip-links, the extracellular filaments that connect the tips of stereocilia and gate hair cell mechano-electrical transduction channels in the inner ear. It plays an essential role in maintenance of normal retinal and cochlear function. Mutations in PCDH15 cause Usher Syndrome (deaf-blindness) and recessive deafness. In developing hair cells, PCDH15 localizes to extracellular linkages that connect the stereocilia and kinocilium into a bundle and regulate its morphogenesis. Protocadherin-15 interacts with transmembrane channel-like proteins TMC1 and TMC2, which have been implicated in mechano-transduction in mammalian hair cells. Protocadherin-15 plays an important role in hair-bundle morphogenesis. **BioVision's Protocadherin 15 (Human) ELISA Kit** is used for the quantitative detection of Protocadherin 15 in serum, plasma, tissue homogenates and other biological fluids. It is based on the principle of sandwich ELISA. The capture antibody is pre-coated on 96-well plates. The standards, test samples and biotin conjugated detection antibody are added to the wells subsequently, and washed with wash buffer. HRP-Streptavidin is added and unbound conjugates are washed away with wash buffer. The HRP enzymatic reaction is detected using TMB-substrate. Finally, an acidic stop solution terminates the enzymatic reaction. The color developed is directly proportional to the amount of Protocadherin 15 in the sample.

## II. Features and Benefits:

- Detection range: 0.313-20 ng/ml
- Sensitivity: 0.188 ng/ml
- Assay Precision; Intra-Assay CV < 8% and Inter-Assay < 10%
- Recovery Rate: 89-104% for serum, 86-98% for EDTA plasma and 89-102% for heparin plasma
- This sandwich ELISA is highly sensitive and specific for the detection of Protocadherin 15. There is no significant cross-reactivity or interference between Protocadherin 15 and analogues.

## III. Sample Types:

Human Serum, Plasma, Tissue lysates and other biological fluids

## IV. Kit Contents:

Components	E5127-100	Storage Temperature	Part Number
ELISA Microplate	8x12 Strips	4°C	E5127-100-1
Lyophilized Standard (20 ng)	2 vials	4°C	E5127-100-2
Sample/Standard Dilution Buffer	20 ml	4°C	E5127-100-3
Biotin-labeled Antibody (Concentrated)	120 µl	4°C (Avoid Light)	E5127-100-4
Antibody Dilution Buffer	10 ml	4°C	E5127-100-5
HRP-Streptavidin Conjugate (SABC)	120 µl	4°C (Avoid Light)	E5127-100-6
SABC Dilution Buffer	10 ml	4°C	E5127-100-7
TMB Substrate	10 ml	4°C (Avoid Light)	E5127-100-8
Stop Solution	10 ml	4°C	E5127-100-9
Wash Buffer (25X)	30 ml	4°C	E5127-100-10
Plate Sealers	5	4°C	E5127-100-11

## V. User Supplied Reagents and Equipment:

- Microplate reader capable of measuring absorbance at 450 nm
- 37°C incubator
- Precision pipettes with disposable tips
- Distilled or deionized water
- Clean Eppendorf tubes for preparing standards or sample dilutions
- Absorbent paper

## VI. Shipping and Storage Conditions:

The entire kit can be shipped at 4°C. The kit should be stored at 4°C for up to 6 months from the date of shipment.

## VII. Reagent and Sample Preparation:

**Note:** Bring all reagents and samples to room temperature (RT) for 20 min before use.

Before using the kit, spin tubes and bring down all components to the bottom of tubes.

After opening and before using, keep plate dry.

Don't let microplate dry during the assay, as dry plate will inactivate active components on plate.

**Wash Buffer:** Dilute 25X Wash Buffer to 1X by adding 30 ml of 25X Wash Buffer and make up the volume to 750 ml with deionized/distilled water. If crystals are present in the 25X Wash Buffer, warm it in a water bath at 40°C. Mix it gently. The solution must be cooled to RT before use. Store unused solution at 4°C.

### 1. Standard Preparation:

- Add 1 ml Sample Dilution Buffer into one Standard tube (labeled as standard tube). Keep the tube at RT for 10 min. Mix thoroughly.
- Label 7 tubes with 1/2, 1/4, 1/8, 1/16, 1/32, 1/64 and blank respectively. Add 0.3 ml of the Sample Dilution Buffer into each tube. Add 0.3 ml of the above Standard solution (from standard tube) into 1<sup>st</sup> tube and mix thoroughly.

**FOR RESEARCH USE ONLY!**

- Transfer 0.3 ml from 1<sup>st</sup> tube to 2<sup>nd</sup> tube and mix them thoroughly. Transfer 0.3 ml from 2<sup>nd</sup> tube to 3<sup>rd</sup> tube and mix them thoroughly, and so on. Sample Dilution Buffer is used for the blank control. (Note: Please use Standard Solutions within 2 h of preparation).

Note: If the standard tube concentration is higher than the range of the kit, please dilute and use.

2. **Biotin-labeled Antibody working solution:** Prepare this working stock 1 h prior to the start of the experiment. Calculate the total volume of the working solution: 0.1 ml/well x quantity of wells. Add 0.1-0.2 ml to the total volume. Dilute the Biotin-labeled antibody with Antibody Dilution Buffer at 1:100. Mix thoroughly.
3. **HRP-Streptavidin Conjugate (SABC):** Prepare this working stock 30 min prior to the start of the experiment. Calculate the total volume of the working solution: 0.1 ml/well x quantity of wells. Add 0.1-0.2 ml to the total volume. Dilute the SABC with SABC Dilution Buffer at 1:100. Mix thoroughly.
4. **Sample Preparation:**

**Note:** Isolate the test samples soon after collecting, then, analyze immediately. Alternatively, aliquot and store at -20°C (≤ 1 month) or -80°C (≤ 2 months). Avoid multiple freeze-thaw cycles. Hemolytic samples are not suitable for this assay

- **Serum:** Place whole blood sample at RT for 2 h or keep at 4 °C overnight and centrifuge for 20 min at approximately 1000xg. Collect the supernatant and carry out the assay immediately. Blood collection tubes should be disposable, non-pyrogenic, and endotoxin free.
- **Plasma:** Collect plasma using EDTA-Na<sub>2</sub> or heparin as an anticoagulant. Centrifuge samples for 15 min at 1000xg at 4°C within 30 min of collection. Collect the supernatant and carry out the assay immediately. Avoid hemolysis and high cholesterol samples.
- **Tissue homogenates:** As hemolytic blood may affect the assay result, it is necessary to remove residual blood by washing tissue with pre-cooled PBS buffer (0.01 M, pH 7.4). Mince tissue after weighing it and homogenize it in PBS (the volume depends on the weight of the tissue). Normally, 9 ml PBS would be appropriate for 1 gram tissue pieces. Some protease inhibitors are recommended to be added to the PBS. Homogenize using a glass homogenizer on ice. To further break the cells, you can sonicate the suspension with an ultrasonic cell disrupter or subject it to freeze-thaw cycles. The homogenates are then centrifuged for 5 min at 5000xg to get the supernatant. The total protein concentration can be determined by BCA kit and the total protein concentration of each well sample should not exceed 0.3 mg/ml.
- **Cell culture supernatant:** Centrifuge supernatant for 20 min at 1000xg at 4°C to remove insoluble impurities and cell debris. Collect the clear supernatant and carry out the assay immediately.
- **Cell Culture Lysate:** Commercial RIPA kits are recommended. Follow the instructions provided. Generally, 0.5 ml RIPA lysis buffer would be appropriate for 2x10<sup>6</sup> cells, DNA must be removed. The total protein concentration can be determined by BCA kit and the total protein concentration of each well sample should not exceed 0.3 mg/ml.
- **Other Biological fluids:** Centrifuge samples for 20 min at 1000xg at 4°C. Collect the supernatant and carry out the assay immediately.

**Note:** End user should estimate the concentration of the target protein in the test sample first, and select a proper dilution factor to make the diluted target protein concentration fall in the optimal detection range of the kit. **The matrix components in the sample may affect the test results. Please dilute the sample ½ with Sample Dilution Buffer before testing.**

**VIII. Assay Protocol:**

**Note:** When diluting samples and reagents, the solutions must be mixed completely and evenly.

Before adding TMB into wells, equilibrate TMB Substrate for 30 min at 37°C.

It is recommended that all standards and samples be run at least in duplicate.

A standard curve must be run with each assay.

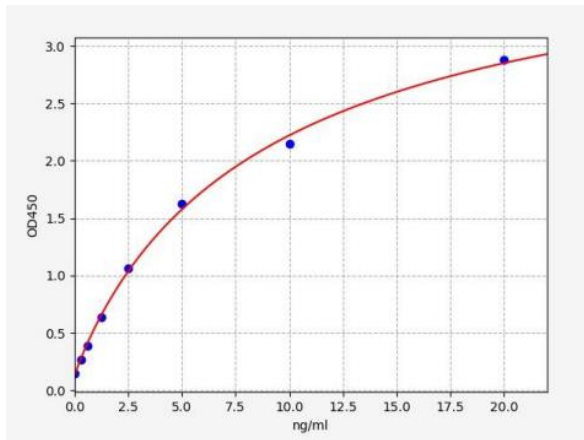
1. Prepare all reagents, **samples** (diluted ½ with Sample Dilution Buffer) and standards as instructed in section VII.
  2. Wash plate 2 times with **1X Wash Buffer** before adding standard, sample (diluted ½ with Sample Dilution Buffer) and control (blank) wells.
  3. Add 100 µl of each **standard or samples** into appropriate wells. Seal the plate with a cover and incubate for 1.5 hours at 37°C.
  4. Remove the cover and discard the plate content. Wash the plate 2 times with 1X Wash Buffer without letting the wells get completely dry.
  5. Add 100 µl of **Biotin-labelled antibody** work solution into the above wells. Seal the plate and incubate at 37°C for 60 min.
  6. Discard the solution and wash 3 times with **1X Wash Buffer**. Wash by filling each well with Wash Buffer (350 µl) using a multichannel pipette or auto washer. Let it soak for 1-2 min, and then remove all residual wash-liquid from the wells by aspiration. After the last wash, remove any remaining Wash Buffer by aspirating or decanting. Tap the plate on absorbent filter papers or other absorbent materials.
- Note: Washing process is very important. If washing is not done well, it may cause a false positive and high background.
7. Add 100 µl of **SABC working solution** into each well, cover the plate and incubate at 37°C for 30 min.
  8. Discard the solution and wash 5 times with **1X Wash Buffer** as described in step 6.
  9. Add 90 µl of **TMB substrate** into each well, cover the plate and incubate at 37°C in dark within 10-20 min. (Note: The reaction time can be shortened or extended according to the actual color change, but not more than 30 min. The reaction can be terminated when apparent gradient appears in standard wells).
  10. Add 50 µl of **Stop Solution** to each well. Read the absorbance at 450 nm within 20 min using a Microplate Reader.

**IX. Calculation:**

For calculation, (the relative O.D.450) = (the O.D.450 of each well) – (the O.D.450 of blank well). The standard curve can be plotted as the relative O.D.450 of each standard solution (Y) Vs the respective concentration of the standard solution (X). The target concentration of the samples can be interpolated from the standard curve. Professional software can also be used for the calculations. If the samples measured are diluted, multiply the dilution factor to the concentrations from interpolation to obtain the concentration before dilution.

**FOR RESEARCH USE ONLY!**

Figure: Typical Standard Curve and OD values are shown below: These standard curves are for demonstration only.



STD (ng/ml)	OD-1	OD-2	Average	Corrected
0	0.148	0.152	0.15	0.000
0.312	0.264	0.272	0.268	0.118
0.625	0.386	0.398	0.392	0.242
1.25	0.632	0.65	0.641	0.491
2.5	1.049	1.079	1.064	0.914
5	1.604	1.65	1.627	1.477
10	2.117	2.179	2.148	1.998
20	2.836	2.918	2.877	2.727

**X. Recovery**

Matrices mentioned below were spiked with certain level of Protocadherin 15 and the recovery rates were calculated by comparing the measured value to the expected amount of Protocadherin 15 in samples.

Matrix	Recovery Range (%)	Average (%)
Serum (n=5)	89-104	95
EDTA Plasma (n=5)	86-98	91
Heparin Plasma (n=5)	89-102	95

**XI. Linearity**

Linearity of the assay kit was determined by spiking samples with appropriate concentration of Protocadherin 15 and their serial dilutions. The results are represented as percentage of calculated concentration to the expected value.

Sample	1:2	1:4	1:8
Serum (n=5)	94-102%	102-105%	85-103%
EDTA Plasma (n=5)	82-97%	87-100%	85-100%
Heparin Plasma (n=5)	84-88%	87-97%	84-99%

**XII. Related Products:**

- Protocadherin-1 (Human) ELISA Kit (Cat. No. E5124)
- H-Cadherin (Human) ELISA Kit (Cat. No. E5123)
- N-Cadherin (Human) ELISA Kit (Cat. No. E5122)
- P-Cadherin (Human) ELISA Kit (Cat. No. E5121)
- E-Cadherin (Human) ELISA Kit (Cat. No. K4189)

**FOR RESEARCH USE ONLY! Not to be used on humans.**