

QuickDetect™ 1-3-β-D-glucan (Human) ELISA Kit

rev 08/20

(Catalog # E4446-100, 100 assays, Store at 4°C)

I. Introduction:

β-Glucans (beta-glucans) comprise a group of β-D-glucose polysaccharides naturally occurring in the cell walls of cereals, bacteria, and fungi, with significantly differing physicochemical properties dependent on the source. Typically, β-glucans form a linear backbone with 1-3 β-glycosidic bonds but vary with respect to molecular mass, solubility, viscosity, branching structure, and gelation properties, causing diverse physiological effects in animals. BioVision's 1-3-β-DG ELISA kit is a sandwich ELISA assay for the quantitative measurement of Human 1-3-β-DG in serum, plasma, and cell culture supernatants in 90 minutes. The density of color is proportional to the amount of Human 1-3-β-DG captured from the samples.

II. Application:

This ELISA kit is used for *in vitro* quantitative determination of 1-3-β-DG

Detection Range: 0.8 - 50 pg/ml

Sensitivity: 0.1 pg/ml

Assay Precision: Intra-Assay: CV < 10%; Inter-Assay: CV < 12% (CV (%) = SD/mean X 100)

III. Specificity:

Human

IV. Sample Type:

Serum, plasma, urine, cell culture samples, biological fluid

V. Kit Contents:

Components	E4446-100	Part No.
Micro ELISA strip-plate	1	E4446-100-1
Standard (72 pg/ml)	0.5 ml	E4446-100-2
Standard diluent	6 ml	E4446-100-3
HRP-Conjugate reagent	10 ml	E4446-100-4
Sample diluent	6 ml	E4446-100-5
Chromogen Solution A	6 ml	E4446-100-6
Chromogen Solution B	6 ml	E4446-100-7
Stop Solution	6 ml	E4446-100-8
Wash buffer (20X)	25 ml	E4446-100-9
Plate sealers	2	E4446-100-10

VI. User Supplied Reagents and Equipment:

- Microplate reader capable of measuring absorbance at 450 nm
- 37°C incubator
- Precision pipettes with disposable tips
- Distilled or deionized water
- Clean eppendorf tubes for preparing standards or sample dilutions
- Absorbent paper

VII. Storage and Handling:

The entire kit may be stored at 4°C in dark for up to 6 months from the date of shipment. Avoid freeze-thaw cycles.

VIII. Reagent Preparation:

Note: Prepare reagents within 30 minutes before the experiment. Before using the kit, spin tubes and bring down all components to the bottom of tubes.

1. **Wash Buffer:** Dilute the (20X) concentrated wash buffer to 1X with distilled water.

2. **Standard Preparation:**

Ten wells are set for standards in a Microelisa strip plate. In Well 1 and Well 2, 50 μl Standard solution and 50 μl Standard Dilution buffer are added and mixed well. In Well 3 and Well 4, 50 μl solution from Well 1 and Well 2 are added respectively. Then 50 μl Standard Dilution buffer are added and mixed well. 50 μl solution is discarded from Well 3 and Well 4. In Well 5 and Well 6, 50 μl solution from Well 3 and Well 4 are added respectively. Then 50 μl Standard Dilution buffer are added and mixed well. In Well 7 and Well 8, 50 μl solution from Well 5 and Well 6 are added respectively. Then 50 μl Standard Dilution buffer are added and mixed well. In Well 9 and Well 10, 50 μl solution from Well 7 and Well 8 are added respectively. Then 50 μl Standard Dilution buffer are added and mixed well. 50 μl solution is discarded from Well 9 and Well 10. After dilution, the total volume in all the wells are 50 μl and the concentrations are 36 pg/ml, 18 pg/ml · 9 pg/ml, 4.5 pg/ml and 2.25 pg/ml, respectively.

FOR RESEARCH USE ONLY! Not to be used on humans.

3. Sample Preparation:

Note: Sample extraction and ELISA assay should be performed as soon as possible after sample collection. If ELISA assay cannot be performed immediately, samples can be stored at -20°C . Avoid multiple freeze-thaw cycles. Samples with NaN_3 should be avoided for this assay.

- **Serum:** After collection of the whole blood, allow the blood to clot by leaving it undisturbed at room temperature. This usually takes 10-20 minutes. Remove the clot by centrifuging at 2,000-3,000 rpm for 20 minutes. If precipitates appear during reservation, the sample should be centrifuge again.
- **Plasma:** Collect the whole blood into tubes with anticoagulant (EDTA or citrate). After incubated at room temperature for 10-20 minutes, tubes are centrifuged for 20 min at 2,000-3,000 rpm. Collect the supernatant carefully as plasma samples. If precipitates appear during reservation, the sample should be centrifuge again.
- **Urine:** Collect urine into aseptic tubes. Collect the supernatant carefully after centrifuging for 20 min at 2,000-3,000 rpm. If precipitates appear during reservation, the sample should be centrifuge again. The preparation procedure of cerebrospinal fluid and pleuroperitoneal fluid is the same as that of urine sample.
- **Cell Samples:** If you want to detect the secretions of cells, collect culture supernatant into aseptic tubes. Collect the supernatant carefully after centrifuging for 20 min at 2,000-3,000 rpm. If you want to detect intracellular components, dilute the cells to $1 \times 10^6/\text{ml}$ with PBS (pH 7.2-7.4). The cells were destroyed to release intracellular components by repeated freezing and thawing. Collect the supernatant carefully after centrifuging for 20 min at 2,000-3,000 rpm. If precipitates appear during reservation, the sample should be centrifuge again.
- **Tissue Samples:** Tissue samples are cut, weighed, frozen in liquid nitrogen and stored at -80°C for future use. The tissue samples were homogenized after adding PBS (pH 7.4). Samples should be operated at 4°C . Collect the supernatant carefully after centrifuging for 20 min at 2,000-3,000 rpm. Aliquot the supernatant for ELISA assay and future use.
- End user should estimate the concentration of the target protein in the test sample first, and select a proper dilution factor to make the diluted target protein concentration fall in the optimal detection range of the kit.

IX. Assay Protocol:

Note: Bring all reagents and samples to room temperature 30 minutes prior to the assay. It is recommended that all standards and samples be run at least in duplicate. A standard curve must be run with each assay.

1. Prepare all reagents, samples and standards as instructed in section VIII.
2. In sample wells, add $40 \mu\text{l}$ Sample dilution buffer and $10 \mu\text{l}$ samples are added (dilution factor is 5). Leave a well empty as blank control. Samples should be loaded onto the bottom without touching the well wall. Mix well with gentle shaking.
3. Add $100 \mu\text{l}$ HRP-Conjugate reagent to each well, except blank well.
4. Incubate 60 min at 37°C after sealing with Closure plate membrane.
5. Remove plate sealer, aspirate and refill with the wash solution. Discard the wash solution after resting for 30 seconds. Repeat the washing procedure for 5 times.
6. Add $50 \mu\text{l}$ Chromogen Solution A and $50 \mu\text{l}$ Chromogen Solution B to each well, mix with gently shaking and incubate at 37°C for 15 minutes in dark.
7. Add $50 \mu\text{l}$ stop solution to each well to terminate the reaction. The color in the well should change from blue to yellow.
8. Read absorbance O.D. at 450 nm within 15 minutes after adding stop solution. The OD value of the blank control well is set as zero.

X. CALCULATION:

Known concentrations of Human 1-3- β -DG Standard and its corresponding reading OD is plotted on the log scale (X-axis) and the log scale (Y-axis) respectively. The concentration of Human 1-3- β -DG in sample is determined by plotting the sample's O.D. on the Y-axis. The original concentration is calculated by multiplying the dilution factor.

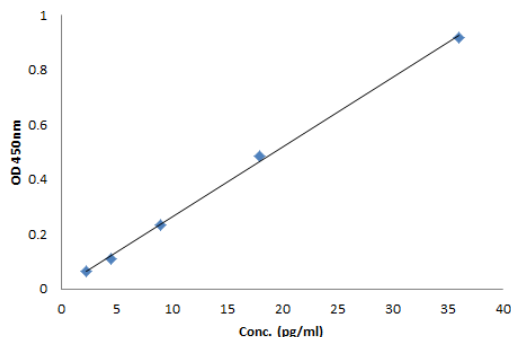


Figure: Typical Standard Curve: These standard curves are for demonstration only. A standard curve must be run with each assay.

XI. RELATED PRODUCTS:

- Alpha-Amylase Antibody (Cat. No. 3014)

FOR RESEARCH USE ONLY! Not to be used on humans.