

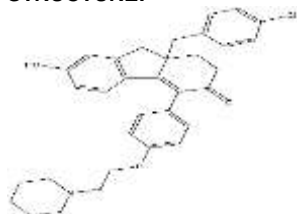
CMP8

ALTERNATE NAME: 9a-[(4-Chlorophenyl)methyl]-7-hydroxy-4-[4-(2-piperidin-1-ylethoxy)phenyl]-2,9-dihydro-1H-fluoren-3-one
CMP-8

CATALOG #: B2328-1
B2328-5

AMOUNT: 1 mg
5 mg

STRUCTURE:



MOLECULAR FORMULA: C₃₃H₃₄ClNO₃

MOLECULAR WEIGHT: 528.08

CAS NUMBER: 851107-28-3

APPEARANCE: Crystalline solid

PURITY: ≥98%

SOLUBILITY: DMSO

STORAGE: -20°C

DESCRIPTION: A potent and selective mutant ERLBD (Estrogen receptor ligand binding domain) ligand. Cell-permeable.

HANDLING: Do not take internally. Wear gloves and mask when handling the product! Avoid contact by all modes of exposure.

RELATED PRODUCTS:

(Z)-4-Hydroxytamoxifen (B1114)
Endoxifen (9614)
Lasofoxifene tartrate (9680)
Toremifene citrate (B1049)

DISCLAIMER: *FOR RESEARCH USE ONLY! Not to be used on humans.*