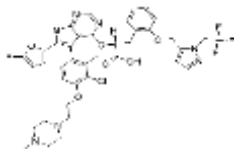


PRODUCT: S63845

ALTERNATE NAME: (R)-2-((5-(3-chloro-2-methyl-4-(2-(4-methylpiperazin-1-yl)ethoxy)phenyl)-6-(5-fluorofuran-2-yl)thieno[2,3-d]pyrimidin-4-yl)oxy)-3-(2-((1-(2,2,2-trifluoroethyl)-1H-pyrazol-5-yl)methoxy)phenyl)propanoic acid

CATALOG #: B1819-250, 1000

AMOUNT: 250 µg, 1 mg

STRUCTURE:

MOLECULAR FORMULA: C₃₉H₃₇ClF₄N₆O₆S

MOLECULAR WEIGHT: 829.26

CAS NUMBER: 1799633-27-4

APPEARANCE: Crystalline solid

SOLUBILITY: DMSO

PURITY: ≥98% by HPLC

STORAGE: Store at -20 °C. Protect from air and light

DESCRIPTION: S63845 is a potent and selective small molecule MCL1 inhibitor with $K_i < 1.2$ nM. S63845 potently kills MCL1-dependent cancer cells, including multiple myeloma, leukaemia and lymphoma cells, by activating the BAX/BAK-dependent mitochondrial apoptotic pathway.

REFERENCES: Kotschy, A., *et al.* (2016). *Nature* 538, 477-482.

HANDLING: Do not take internally. Wear gloves and mask when handling the product! Avoid contact by all modes of exposure.

RELATED PRODUCTS:

ABT-737 (**2463**)

AT-101 (**2380**)

Bcl-2 Inhibitor GX15-070 (**2040**)

Gambogic acid (**2785**)

Mcl-1 Antibody (**3035**)

Pyridoclast (**B1817**)

TW-37 (**2789**)

ABT-263 (**Cat. No. 2467-5, 25**)

Bcl2 Inhibitor GX15-070 (**Cat. No. 2040-5**)

Bcl2 Inhibitor ABT-199 (**Cat. No. 2253-1, 5**)

BH3I-1 (**Cat. No. B1277-5,25**)

USAGE: **FOR RESEARCH USE ONLY! Not to be used in humans**