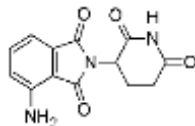


**PRODUCT: Pomalidomide****ALTERNATE NAME:** 4-amino-2-(2,6-dioxopiperidin-3-yl)isoindoline-1,3-dione; CC4047**CATALOG #:** B1811-5, 25**AMOUNT:** 5 mg, 25 mg**STRUCTURE:****MOLECULAR FORMULA:** C<sub>13</sub>H<sub>11</sub>N<sub>3</sub>O<sub>4</sub>**MOLECULAR WEIGHT:** 273.24**CAS NUMBER:** 19171-19-8**APPEARANCE:** Yellow solid**SOLUBILITY:** DMSO (>8 mg/ml)**PURITY:** ≥98%**STORAGE:** Store at -20 °C. Protect from air and light**DESCRIPTION:** Pomalidomide is a derivative of Thalidomide (Cat. No. 2020) and a second-generation immunomodulatory drug. Pomalidomide targets the E3 ligase protein cereblon, preventing cereblon autoubiquitination activity. It has been shown to exert antiproliferative, antiangiogenic, and immunomodulatory effects against myeloma cells, modulating cell adhesion, decreasing production of key pro-survival cytokines, including TNF-α.**REFERENCES:** Lopez-Girona, A. *et al.* (2012). *Leukemia* **26**, 2326-2335.**HANDLING:** Do not take internally. Wear gloves and mask when handling the product! Avoid contact by all modes of exposure.**RELATED PRODUCTS:**(R,S)-Lenalidomide (**Cat. No. 1862**)EZSolution™ (R,S)-Lenalidomide (**Cat. No. B1503**)Pomalidomide (**Cat. No. B1811**)(±)-Thalidomide (**Cat. No. 2020**)**USAGE:** **FOR RESEARCH USE ONLY! Not to be used in humans**