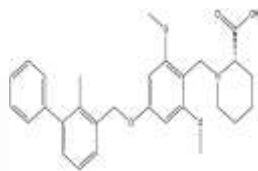


PRODUCT: PD-1/PD-L1 Inhibitor 1**ALTERNATE NAME:** (2S)-1-[[[2,6-dimethoxy-4-[(2-methyl[1,1'-biphenyl]-3-yl)methoxy]phenyl]methyl]-2-piperidinecarboxylic acid**CATALOG #:** B1213-5,25**AMOUNT:** 5 mg, 25 mg**STRUCTURE:****MOLECULAR FORMULA:** C₂₉H₃₃NO₅**MOLECULAR WEIGHT:** 475.58**CAS NUMBER:** 1675201-83-8**APPEARANCE:** White to off-white solid**SOLUBILITY:** DMSO (>30 mg/ml)**PURITY:** ≥98% by HPLC**STORAGE:** Store at -20°C. Protect from air and light.**DESCRIPTION:** PD1-PD-L1 inhibitor 1 (PD1-PD-L1-IN-1) is an inhibitor of the PD1-PD-L1 protein-protein interaction. Also acts as an immunomodulator. Programmed death ligand 1 (PD-L1) is a protein in humans that is encoded by the CD274 gene and the upregulation of PD-L1 allows cancers to evade the host immune system. High tumor expression of PD-L1 was associated with increased tumor aggressiveness and a 4.5-fold increased risk of death.**REFERENCES:** Tsukahara T. *et.al.* (2016). *Expert Opin. Biol. Ther.* **16**,1049-1057**HANDLING:** Do not take internally. Wear gloves and mask when handling the product! Avoid contact by all modes of exposure.**RELATED PRODUCTS:**PD-1/PDCD1 Antibody (**6931**)PD-1 (human) ELISA Kit (**K4153**)PD-1/PD-L1 Inhibitor 1 (**B1213**)PD-1/PD-L1 Inhibitor 2 (**B1050**)Human CellExp™ PD-1/PDCD1, Human Recombinant (**7498**)Human CellExp™ PD-1/PDCD1, Mouse Recombinant (**7499**)Human CellExp™ PD-1/PDCD1, C-Fc Tag, Human Recombinant (**7500**)Human CellExp™ PD-1/PDCD1, C-Fc Tag, Mouse Recombinant (**7503**)Human CellExp™ Biotinylated PD-1/PDCD1, C-Fc Tag, Human Recombinant (**7877**)**USAGE:** **FOR RESEARCH CH USE ONLY! Not to be used in humans**