

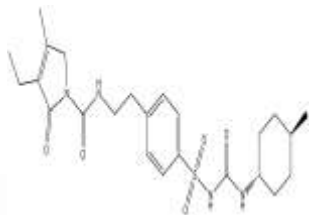
**PRODUCT: Glimepiride**

**ALTERNATE NAME:** 3-Ethyl-2,5-dihydro-4-methyl-N-[2-[4-[[[(trans-4-methylcyclohexyl)amino]carbonyl]amino]sulfonyl]phenyl]ethyl]-2-oxo-1H-pyrrole-1-carboxamide; Amaryl; Glimperide

**CATALOG #:** B1101-10, 50

**AMOUNT:** 10 mg, 50 mg

**STRUCTURE:**



**MOLECULAR FORMULA:** C<sub>24</sub>H<sub>34</sub>N<sub>4</sub>O<sub>5</sub>S

**MOLECULAR WEIGHT:** 490.62

**CAS NUMBER:** 93479-97-1

**APPEARANCE:** White Solid

**SOLUBILITY:** DMSO (>10 mg/ml)

**PURITY:** ≥98% by HPLC

**STORAGE:** Store at -20°C. Protect from air and light.

**DESCRIPTION:** Glimepiride is a potent K<sub>ir</sub>6 (K<sub>ATP</sub>) channel blocker and anti-diabetic agent. Inhibits pinacidil-activated cardiac K<sub>ir</sub>6 channels with an IC<sub>50</sub> of 6.8 nM. Glimepiride displays a higher potency compared to Glibenclamide with respect to stimulation of glucose transport, glucose transporter isoform 4 (GLUT4) translocation and lipid and glycogen synthesis in normal and insulin-resistant adipocytes and in muscle cells, as well as of the potential underlying signaling processes at the molecular level.

**REFERENCES:** Lawrence, C.L., *et al.* (2002). *Br. J. Pharmacol.* **136**, 746-752.

**HANDLING:** Do not take internally. Wear gloves and mask when handling the product! Avoid contact by all modes of exposure.

**RELATED PRODUCTS:**

Dipeptidylpeptidase IV, Human Plasma (**Cat. No. 4709-10**)  
Dipeptidylpeptidase IV, Human Recombinant (**Cat. No. 4710-10, 50, 1000**)  
Dipeptidylpeptidase IV Inhibitor, K 579 (**Cat. No. 1963-1, 5**)  
Dipeptidylpeptidase IV Inhibitor, NVP DPP 728 (**Cat. No. 1964-1, 5**)  
Diprotin A (**Cat. No. 2191-5, 25**)  
Diprotin B (**Cat. No. 2192-5, 25**)  
DiscoveryPak™ DPP-4 Inhibitors Set (**K890-5**)  
DPP4 Activity Assay Kit (**Cat. No. K779-100**)  
DPP4 Inhibitor Screening Kit (**Cat. No. K780-100**)  
Linagliptin (**Cat. No. 2240-50, 250**)  
MK-3102 (**Cat. No. 9599-1,5**)  
Sitagliptin Phosphate Monohydrate (**Cat. No. 1757-100, 1G**)  
Vlidagliptin (**Cat. No. 2188-10, 50**)

**USAGE:** **FOR RESEARCH CH USE ONLY! Not to be used in humans**