

Anti-IL-15 Polyclonal Antibody

CATALOG NO.: A2382-50 (50 µl)
A2382-100 (100 µl)

BACKGROUND DESCRIPTION: The interleukin-15 (IL-15) protein is a cytokine that regulates T and natural killer cell activation and proliferation. IL-15 and IL-2 share many biological activities, and may negatively regulate each other's activity. IL-15 stimulates neutrophil phagocytosis and also controls the number of CD8-positive memory cells.

ALTERNATE NAMES: IL15; Interleukin 15; MGC9721

ANTIBODY TYPE: Polyclonal

HOST/ISOTYPE: Rabbit / IgG

IMMUNOGEN: Recombinant human IL-15 protein

PURIFICATION: Affinity purification

MOLECULAR WEIGHT: 14-18 kDa

FORM: Liquid

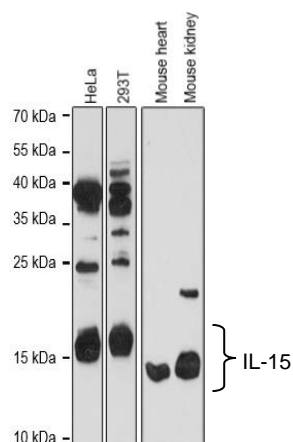
FORMULATION: Liquid in PBS with 0.02% sodium azide, 50% glycerol, pH 7.3

SPECIES REACTIVITY: Human, Mouse

STORAGE CONDITIONS: Aliquot and store at -20 °C. Avoid repeated freeze-thaw cycles

APPLICATION: Western blot: 1:500 to 1:2000 dilution

This information is only intended as a guide. The optimal dilutions must be determined by the user



Western blot analysis of various cell lines and tissue extracts using Anti-IL-15 Polyclonal Antibody.

RELATED PRODUCTS:

Anti-IL-18 Polyclonal Antibody (cat. No. A2337)
 Anti-IL-6 Antibody (Cat. No. A1398)
 IL-2 Antibody (Cat. No. 5131)
 Anti-IL-8, Humanized Antibody (Cat. No. A2289)
 Anti-IL-5 (Reslizumab), Humanized Antibody (Cat. No. A2167)

FOR RESEARCH USE ONLY! Not to be used on humans.