

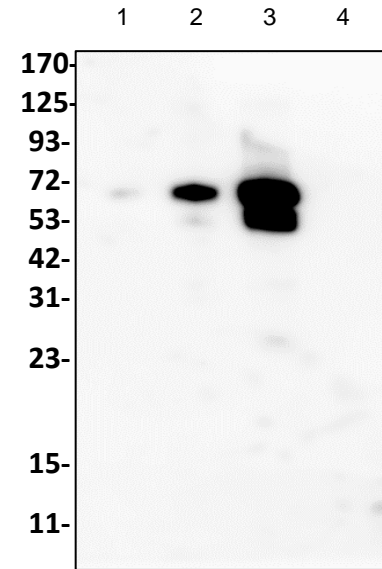
## Anti-cBSA Polyclonal Antibody

<b>CATALOG #:</b>	A2376-30T A2376-100	30 µg 100 µg
<b>ALTERNATE NAMES:</b>	Cationized bovine serum albumin; cationized albumin	
<b>HOST:</b>	Rabbit	
<b>IMMUNOGEN:</b>	Cationized BSA	
<b>INTERNAL ID:</b>	R50	
<b>ISOTYPE:</b>	Rabbit IgG	
<b>FORM:</b>	Liquid	
<b>FORMULATION:</b>	0.5 mg/ml of antibody in PBS, 30% glycerol, 0.5% BSA, 0.5 mM EDTA and 0.03% Proclin, pH 7.2	
<b>SPECIFICITY:</b>	Cationized BSA	
<b>STORAGE CONDITIONS:</b>	Aliquot and store at -20 °C. Avoid repeated freeze/thaw cycles.	

**DESCRIPTION:** The cationized bovine serum albumin (cBSA) carrier protein is prepared by modifying native BSA with excess ethylenediamine, which caps all the negatively charged carboxyl groups of BSA and introduces extra positively charged primary amines. cBSA is a highly positively charged protein and has high pI (>11). cBSA conjugated antigens have significantly increased immunogenicity as compared to the native or unmodified BSA. The introduction of extra primary amines provides more active sites for the conjugation of haptens and antigens such as small molecules and small peptides, using EDC/NHS based crosslinking protocols etc. Additionally, the hapten-cBSA conjugates are more soluble.

**APPLICATION:** Western blot: 1:50-200, ELISA 1:500-2000

**Note:** This information is only intended as a guide. The optimal dilutions must be determined by the user.



Anti-cBSA Polyclonal Antibody was used to perform Western blot analysis on:

1. cBSA 2 ng
2. cBSA 10 ng
3. cBSA 50 ng
4. BSA 10 ng

### RELATED PRODUCTS:

Cationized-BSA (Cat. No. P1651)  
Anti-BSA Polyclonal Antibody (Cat. No. 5998)  
Maleimide Activated BSA (Cat. No. M1316)  
AGE-BSA (Cat. No. 2221)  
Glucose-AGE-BSA (Cat. No. 2223)

**FOR RESEARCH USE ONLY! Not to be used on humans.**