

Anti-Phospho-Beta Catenin (Ser37) Polyclonal Antibody

07/21

CATALOG NO.: **A2361-50 (50 µl)**
A2361-100 (100 µl)

BACKGROUND DESCRIPTION: Beta catenin is a key downstream component of the canonical Wnt signaling pathway. In the presence of Wnt, beta catenin translocates to the nucleus and acts as a coactivator for TCF/LEF family transcription factors. Beta catenin acts as a key regulator of cell adhesion at adherens junctions, and for the maintenance of epithelial cell layers. Mutations in beta catenin are a cause of colorectal cancer and ovarian cancer.

ALTERNATE NAMES: Cadherin associated protein; Catenin beta 1; CATNB; CHBCAT; CTNB1; CTNNB; CTNNB1

ANTIBODY TYPE: Polyclonal

HOST/ISOTYPE: Rabbit / IgG

IMMUNOGEN: Synthesized peptide derived from human beta catenin around the phosphorylation site of serine 37

PURIFICATION: Affinity purification

MOLECULAR WEIGHT: 85 kDa

FORM: Liquid

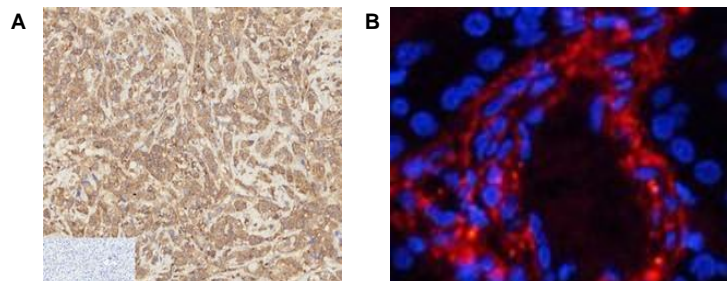
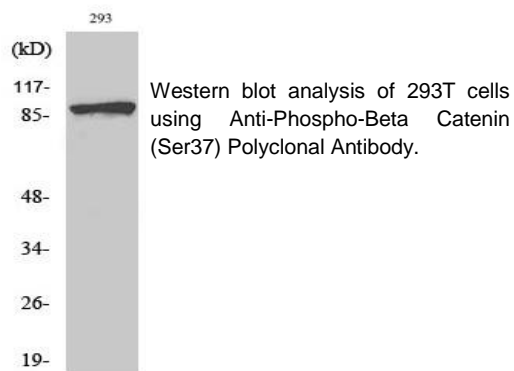
FORMULATION: In PBS with 0.02% sodium azide, 0.5% BSA and 50% glycerol, pH 7.4

SPECIES REACTIVITY: Human

STORAGE CONDITIONS: Aliquot and store at -20 °C. Avoid repeated freeze-thaw cycles

APPLICATIONS: Western blot: 1:500 to 1:2000 dilution; IHC: 1:100 to 1:300 dilution; IF: 1:200 to 1:1000 dilution

This information is only intended as a guide. The optimal dilutions must be determined by the user



Anti-Phospho-Beta Catenin (Ser37) Polyclonal Antibody was used to perform **A**) immunocytochemistry analysis on human breast cancer (negative control image in gray); and **B**) immunofluorescence analysis of human kidney tissue.

RELATED PRODUCTS:

Anti-Wnt-1 Antibody (Cat. No. 3571)
 Anti-Catenin, beta Antibody (CTNNB1/1507) (Cat. No. A1467)
 Anti-LGR4, Humanized Antibody (Cat. No. A2296)
 Cadherin Antibody (Cat. No. 3365R)
 Anti-WNT5A Rabbit Monoclonal Antibody (Cat. No. A2246)

FOR RESEARCH USE ONLY! Not to be used on humans.