

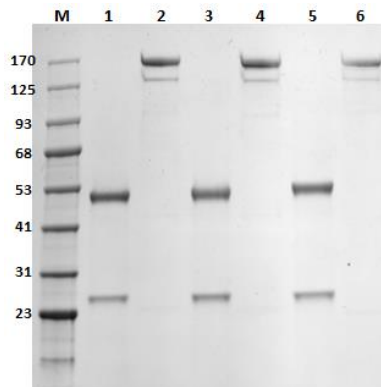
Anti-Hepatitis C Virus Core Antigen Monoclonal Antibody (C8)

CATALOG NO.: A2357-50 (50 µl)
 A2357-100 (100 µl)

BACKGROUND DESCRIPTION: Hepatitis C virus (HCV) is a positive, single-stranded RNA virus in the Flaviviridae family. The HCV core protein represents the first 191 amino acids of the viral precursor polyprotein. Polymerization of the HCV core protein forms the virus capsid, which houses its RNA genome. HCV is the cause of chronic hepatitis, liver cirrhosis, and some cancers in humans through blood and body fluid transmission. After translation, signal peptidases of the host cleave the precursor polyprotein and remove the signal peptide, which generates the HCV core protein antigen (HCVcAg). Its primary sequence is the most conserved sequence among the HCV proteins, making it a potential protein marker for HCV infection. The HCV core protein has been previously shown to circulate in the bloodstream of HCV-infected patients, therefore it serves as a well-developed marker for the diagnosis of infection.

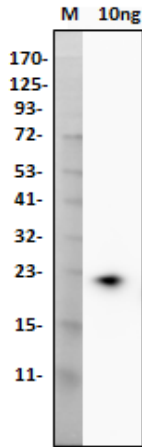
ALTERNATE NAMES:	Core protein p21 antibody, HCV core antigen antibody, HCV core protein antibody, Hepatitis C Virus core protein antibody
ANTIBODY TYPE:	Monoclonal
CLONE:	C8 (epitope within amino acids 1-50 of HCVcAg)
HOST/ISOTYPE:	Human / Mouse IgG2 kappa
SOURCE:	Heavy Chain (CH) and Light Chain (CL) expressed in HEK293
PURIFICATION:	Protein A Purification
MOLECULAR WEIGHT:	170 kDa
FORM:	Liquid
FORMULATION:	In PBS with 1% BSA, 0.5 mM EDTA, 30% glycerol, and 0.03% Proclin
SPECIES REACTIVITY:	Hepatitis C Virus Core Antigen
STORAGE CONDITIONS:	Aliquot and store at -20 °C. Avoid repeated freeze-thaw cycles
APPLICATIONS:	Western Blot: 1:200 – 1:500 ELISA: 1:1000 – 1:5000

This information is only intended as a guide. The optimal dilutions must be determined by the user

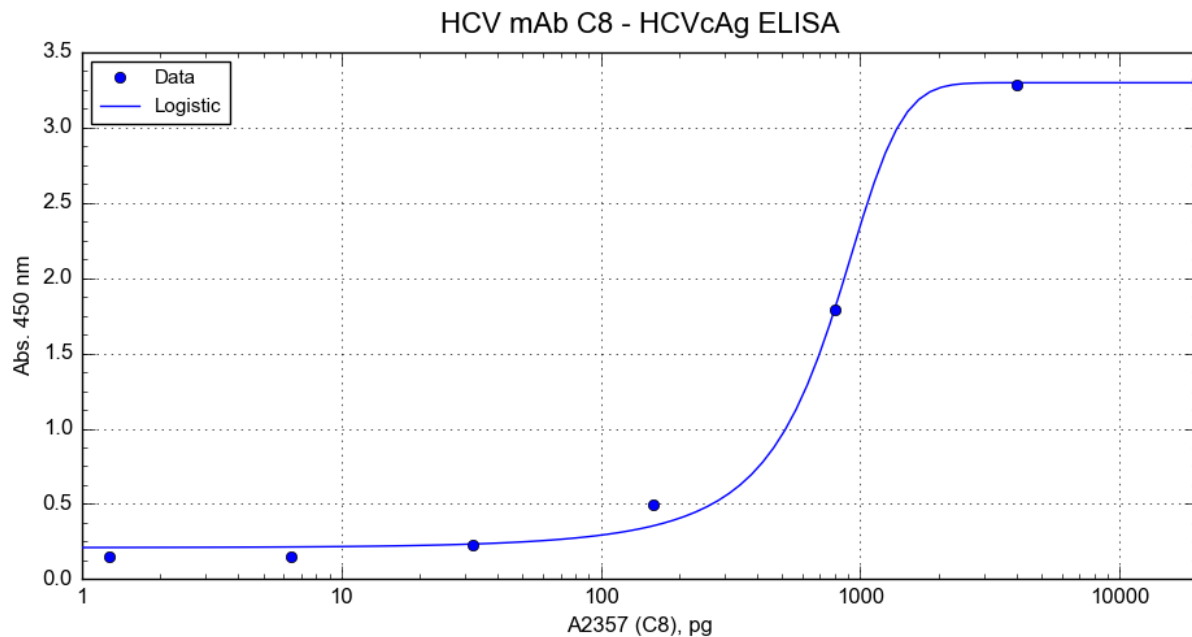


SDS-PAGE (4-20%) of Recombinant HCV Core Antigen Monoclonal Antibody:
 3 µg of each clone of Hepatitis C Virus Core Antigen monoclonal antibody is loaded under reducing (R) and non-reducing (NR) conditions and stained with Coomassie Blue.

Lane 1 & 2) Clone C5 Cat. No. A2356, **3 & 4) Clone B1** (R) and (NR) Cat. No. A2355, **5 & 6) Clone C8** (R) and (NR) Cat. No. A2357



Western Blot: 10ng of recombinant HCV Core Antigen detected using anti-HCV monoclonal antibody (C8).



ELISA performed with Anti-Hepatitis C Virus Core Antigen Monoclonal Antibody: Plate was coated with Recombinant Hepatitis C Core Antigen (Cat. No. P1548) and detected using HCV core antigen monoclonal antibody clone C8 (Cat. No. A2357), followed by detection with anti-human IgG-HRP conjugate.

RELATED PRODUCTS:

Hepatitis C Virus Core Antigen Monoclonal Antibody (B1) (Cat. No. A2355)
 Hepatitis C Virus Core Antigen Monoclonal Antibody (C5) (Cat. No. A2356)
 Virus DNA/RNA Kit (Cat. No. K1360)
 Xpress Virus DNA/RNA Kit (Cat. No. K1361)
 PEG Virus Precipitation Kit (Cat. No. K904)
 Dengue Virus IgG Capture ELISA Kit (Cat. No. E4670)
 Dengue Virus IgM ELISA Kit (Cat. No. E4671)
 Adeno-associated Virus Mini Purification Kit, all serotypes (Cat. No. K1304)
 Adeno-associated Virus Maxi Purification Kit, all serotypes (Cat. No. K1311)
 Anti-Influenza B Virus Mouse IgG2b Detection Antibody (Cat. No. A2085)

FOR RESEARCH USE ONLY! Not to be used on humans.