

Anti-TIPIN Polyclonal Antibody

CATALOG NO.: **A2343-50 (50 µl)**
A2343-100 (100 µl)

BACKGROUND DESCRIPTION: The TIMELESS interacting protein (TIPIN) is a part of the replisome complex, which supports DNA replication. TIPIN binds TIMELESS, which is involved in circadian rhythm regulation, and protects cells against DNA damage and stress.

ALTERNATE NAMES: TIMELESS Interacting Protein; CSM3 Homolog; FLJ20516

ANTIBODY TYPE: Polyclonal

HOST/ISOTYPE: Rabbit / IgG

IMMUNOGEN: Recombinant fusion protein of human TIPIN

PURIFICATION: Immunogen affinity chromatography

MOLECULAR WEIGHT: 50 kDa (observed)

FORM: Liquid

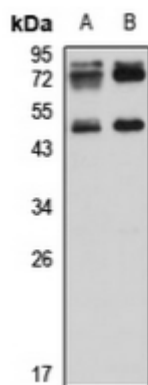
FORMULATION: In 0.42% potassium phosphate, 0.87% NaCl, pH 7.3, w/30% glycerol and 0.01% sodium azide

SPECIES REACTIVITY: Human, Mouse

STORAGE CONDITIONS: Aliquot and store at -20 °C. Avoid repeated freeze-thaw cycles

APPLICATIONS: Western Blotting: 1:500 to 1:2000 dilution

This information is only intended as a guide. The optimal dilutions must be determined by the user



Western blot analysis of **A)** HeLa and **B)** MCF7 whole cell lysate samples using Anti-TIPIN Polyclonal Antibody.

RELATED PRODUCTS:

Anti-PER1 Polyclonal Antibody (Cat. No. A2328)
 Anti-ARNTL Polyclonal Antibody (Cat. No. A2330)
 Anti-CLOCK Polyclonal Antibody (Cat. No. A2329)
 Anti-BHLHE40 Polyclonal Antibody (Cat. No. A2333)
 Anti-CSNK1E Polyclonal Antibody (Cat. No. A2334)

FOR RESEARCH USE ONLY! Not to be used on humans.