

# Anti-CRY2 Polyclonal Antibody

CATALOG NO.: **A2342-50 (50 µl)**  
**A2342-100 (100 µl)**

**BACKGROUND DESCRIPTION:** Cryptochrome-2 (CRY2) is a flavin adenine dinucleotide-binding protein that is a key regulator of the circadian clock. The circadian autoregulatory loop involves PERIOD heterodimers with cryptochrome proteins interacting with CLOCK/ARNTL. Disruptions in the CRY2 gene are associated with altered sleep patterns and sleep disorders.

**ALTERNATE NAMES:** Cryptochrome Circadian Clock 2; Cryptochrome-2; HCRY2; PHLL2

**ANTIBODY TYPE:** Polyclonal

**HOST/ISOTYPE:** Rabbit / IgG

**IMMUNOGEN:** KLH conjugated synthetic peptide of Human CRY2 protein (amino acids 564 to 593)

**PURIFICATION:** Saturated Ammonium Sulfate (SAS) precipitation followed by dialysis against PBS

**MOLECULAR WEIGHT:** 67 kDa

**FORM:** Liquid

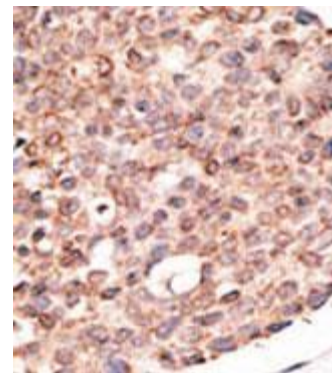
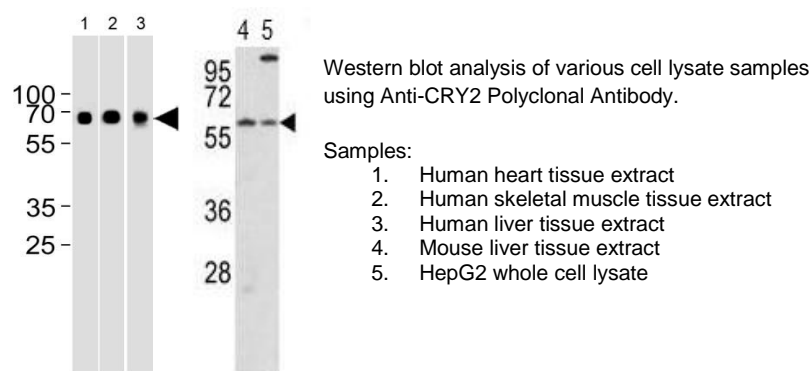
**FORMULATION:** In PBS with 0.09% sodium azide

**SPECIES REACTIVITY:** Human, Mouse

**STORAGE CONDITIONS:** Aliquot and store at -20 °C. Avoid repeated freeze-thaw cycles

**APPLICATIONS:** Western Blotting: 1:1000 dilution; IHC: 1:50 to 1:100 dilution

This information is only intended as a guide. The optimal dilutions must be determined by the user



Immunohistochemistry analysis of human breast cancer tissue sample using Anti-CRY2 Polyclonal Antibody.

## RELATED PRODUCTS:

Anti-PER1 Polyclonal Antibody (Cat. No. A2328)  
 Anti-BHLHE40 Polyclonal Antibody (Cat. No. A2333)  
 Anti-ARNTL Polyclonal Antibody (Cat. No. A2330)  
 Anti-CSNK1E Polyclonal Antibody (Cat. No. A2334)  
 Anti-CLOCK Polyclonal Antibody (Cat. No. A2329)

**FOR RESEARCH USE ONLY! Not to be used on humans.**