

Anti-PAD4 Polyclonal Antibody

CATALOG NO.: **A2324-50** (50 µg)
 A2324-100 (100 µg)

BACKGROUND DESCRIPTION: Protein arginine deiminases (PADs) are a family of guanidine-modifying enzymes that catalyze the post-translational modification of target proteins by converting arginine to citrulline. Excessive citrullination of proteins may result in disease states. PAD4 (also known as PADI5) is expressed in neutrophils and in a variety of tissues. PAD4 is known to citrullinate histones, which initiates chromatin decondensation in neutrophils and the subsequent release of neutrophil extracellular traps (NETs), which leads to a lytic form of cell death known as NETosis. The presence of serum PAD4 autoantibodies has been associated with rheumatoid arthritis.

ALTERNATE NAMES: Peptidyl Arginine Deiminase 4; PDI5; HL-60 PAD; PADI5; PDI4; PAD; PADI-H Protein; PADI4

ANTIBODY TYPE: Polyclonal

HOST/ISOTYPE: Rabbit / IgG

IMMUNOGEN: Recombinant full length protein of human PAD4

PURIFICATION: Immunogen affinity chromatography

MOLECULAR WEIGHT: 74 kDa

FORM: Liquid

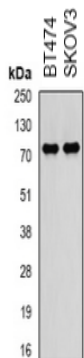
FORMULATION: In 0.42% Potassium phosphate, 0.87% NaCl, pH 7.3, 30% glycerol, and 0.01% sodium azide

SPECIES REACTIVITY: Human, Rat

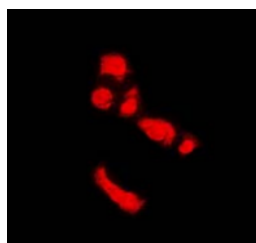
STORAGE CONDITIONS: Aliquot and store at -20 °C. Avoid repeated freeze-thaw cycles

APPLICATIONS: Western Blot (WB): 1:500 to 1:2000 dilution; Immunohistochemistry (IHC): 1:50 to 1:200 dilution
 Immunofluorescence (IF): 1:50 to 1:100 dilution

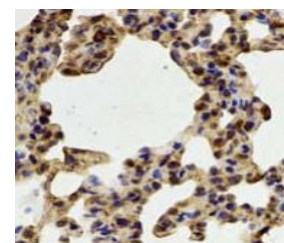
This information is only intended as a guide. The optimal dilutions must be determined by the user



Western blot analysis of BT474 and SKOV3 whole cell lysates using PAD4 polyclonal antibody



Immunofluorescence of U2OS cells using PAD4 polyclonal antibody



IHC analysis of rat lung tissue sample using PAD4 polyclonal antibody

RELATED PRODUCTS:

Anti-PAD1 Polyclonal Antibody (Cat. No. A2321)
 Anti-PAD2 Polyclonal Antibody (Cat. No. A2322)
 Anti-PAD3 Polyclonal Antibody (Cat. No. A2323)
 Anti-PAD4 Monoclonal Antibody (Clone 11F9) (Cat. No. A2314)
 Anti-PAD6 Polyclonal Antibody (Cat. No. A2325)

FOR RESEARCH USE ONLY! Not to be used on humans.