

Anti-PAD2 Polyclonal Antibody

CATALOG NO.: **A2322-50 (50 µg)**
 A2323-100 (100 µg)

BACKGROUND DESCRIPTION: Protein arginine deiminases (PADs) are a family of guanidine-modifying enzymes that catalyze the post-translational modification of target proteins by converting arginine to citrulline. Excessive citrullination of proteins may result in disease states. PAD2 is the most widely expressed and evolutionarily conserved family member. Known substrates for PAD2 include myelin basic protein and vimentin, and PAD2 is thought to play a role in the onset and progression of neurodegenerative diseases such as Alzheimer's and multiple sclerosis. PAD2 may also play a role in transcriptional regulation as it is capable of citrullinating histone H3.

ALTERNATE NAMES: Peptidyl Arginine Deiminase 2; PDI2; KIAA0994; PAD-H19; PADI2

ANTIBODY TYPE: Rabbit Polyclonal

HOST/ISOTYPE: Rabbit / IgG

IMMUNOGEN: Recombinant Human PAD2 protein (amino acids 1 to 665)

PURIFICATION: Protein G purification

MOLECULAR WEIGHT: Detects two bands at 76 kDa and 50 kDa

FORM: Liquid

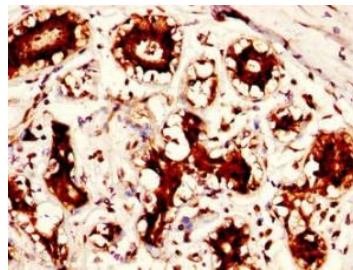
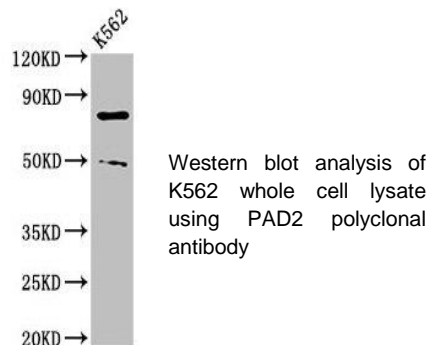
FORMULATION: In 0.01 M PBS, pH 7.4 with 50% glycerol, 0.03% Proclin 300

SPECIES REACTIVITY: Human

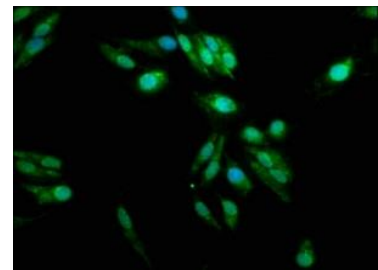
STORAGE CONDITIONS: Aliquot and store at -20 °C. Avoid repeated freeze-thaw cycles

APPLICATIONS: Western blot: 1:500 to 1:5000 dilution; IHC: 1:200 to 1:500 dilution; IF: 1:50 to 1:200 dilution

This information is only intended as a guide. The optimal dilutions must be determined by the user



IHC of human breast cancer tissue sample using PAD2 polyclonal antibody



Immunofluorescence of HeLa cells using PAD2 polyclonal antibody

RELATED PRODUCTS:

Anti-PAD1 Polyclonal Antibody (Cat. No. A2321)
 Anti-PAD2 Monoclonal Antibody (Clone 9F7) (Cat. No. A2312)
 Anti-PAD3 Polyclonal Antibody (Cat. No. A2323)
 Anti-PAD4 Polyclonal Antibody (Cat. No. A2324)
 Anti-PAD6 Polyclonal Antibody (Cat. No. A2325)

FOR RESEARCH USE ONLY! Not to be used on humans.