

Anti-PAD1 Polyclonal Antibody

CATALOG NO.: **A2321-50 (50 µg)**
A2321-100 (100 µg)

BACKGROUND DESCRIPTION: Protein arginine deiminases (PADs) are guanidine-modifying enzymes that catalyze the post-translational modification of target proteins by converting arginine to citrulline. Excessive citrullination of proteins may result in disease states. PAD1 is expressed in uterus and throughout the epidermis, and is involved in the late stages of epidermal differentiation and possibly hair follicle formation. Disruption in PAD1 activity is associated with certain skin diseases and Laing Distal Myopathy.

ALTERNATE NAMES: Peptidyl Arginine Deiminase 1; PDI1; Peptidylarginine Deiminase I; HPAD10; PDI; PADI1

ANTIBODY TYPE: Rabbit polyclonal

HOST/ISOTYPE: Rabbit / IgG

IMMUNOGEN: Recombinant fusion protein sequence corresponding to amino acids 1-260 of human PADI1

PURIFICATION: Affinity purification

MOLECULAR WEIGHT: 74 kDa calculated; 65 kDa observed

FORM: Liquid

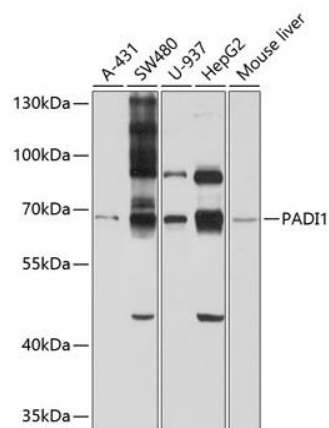
FORMULATION: In PBS with 0.02% sodium azide, 50% glycerol, pH 7.3

SPECIES REACTIVITY: Human, Mouse

STORAGE CONDITIONS: Aliquot and store at -20 °C. Avoid repeated freeze-thaw cycles

APPLICATIONS: Western Blot (WB): 1:200 to 1:2000 dilution

This information is only intended as a guide. The optimal dilutions must be determined by the user



Western blot analysis of lysates from various cell lines and mouse liver tissue sample using PAD1 polyclonal antibody

RELATED PRODUCTS:

Anti-PAD1 Monoclonal Antibody (Clone 6B4) (Cat. No. A2311)
 Anti-PAD2 Polyclonal Antibody (Cat. No. A2322)
 Anti-PAD3 Polyclonal Antibody (Cat. No. A2323)
 Anti-PAD4 Polyclonal Antibody (Cat. No. A2324)
 Anti-PAD6 Polyclonal Antibody (Cat. No. A2325)

FOR RESEARCH USE ONLY! Not to be used on humans.