

Anti-Citrullinated Myelin Basic Protein Polyclonal Antibody

04/21

CATALOG NO.: A2320-50 (50 µl)
 A2320-100 (100 µl)

BACKGROUND DESCRIPTION: Myelin basic protein (MBP) comprises several isoforms of a single gene product, which together make up a major component of the myelin sheath of oligodendrocytes and Schwann cells in the central nervous system. MBP contains 19 arginine residues that can be citrullinated by protein arginine deiminases (PADs), which will decrease the positive charge of the protein. The decrease in positive charge disrupts MBP interactions with the lipid membranes of myelin sheath cells. Citrullinated MBP is associated with demyelination and multiple sclerosis.

ALTERNATE NAMES: Myelin Membrane Encephalitogenic Protein; Myelin A1 Protein; Golli-MBP; MBP

ANTIBODY TYPE: Polyclonal

HOST/ISOTYPE: Rabbit / IgG

IMMUNOGEN: Synthetic peptide of human myelin basic protein (isoform 5) citrullinated at R122 and R130

PURIFICATION: Peptide affinity purification

MOLECULAR WEIGHT: 12-18 kDa

FORM: Liquid

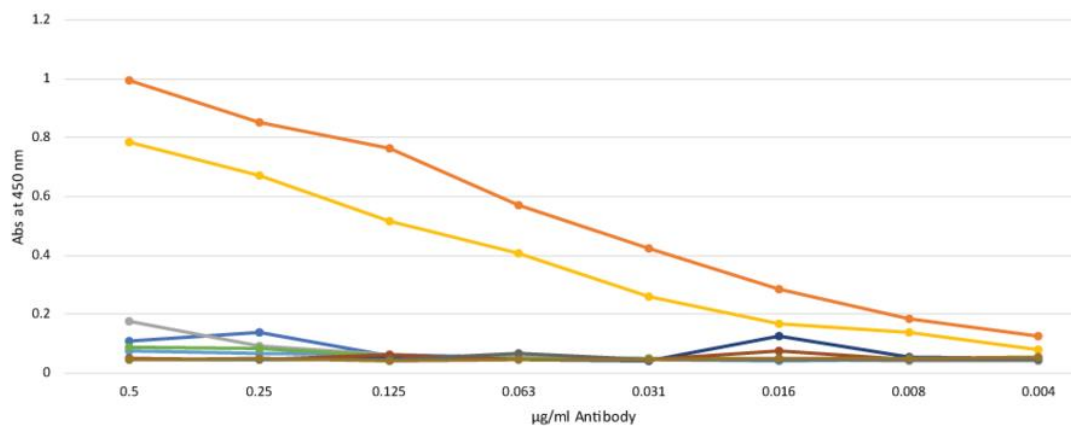
FORMULATION: PBS, pH 7.2, with 50% glycerol and 0.02% sodium azide

SPECIES REACTIVITY: Human

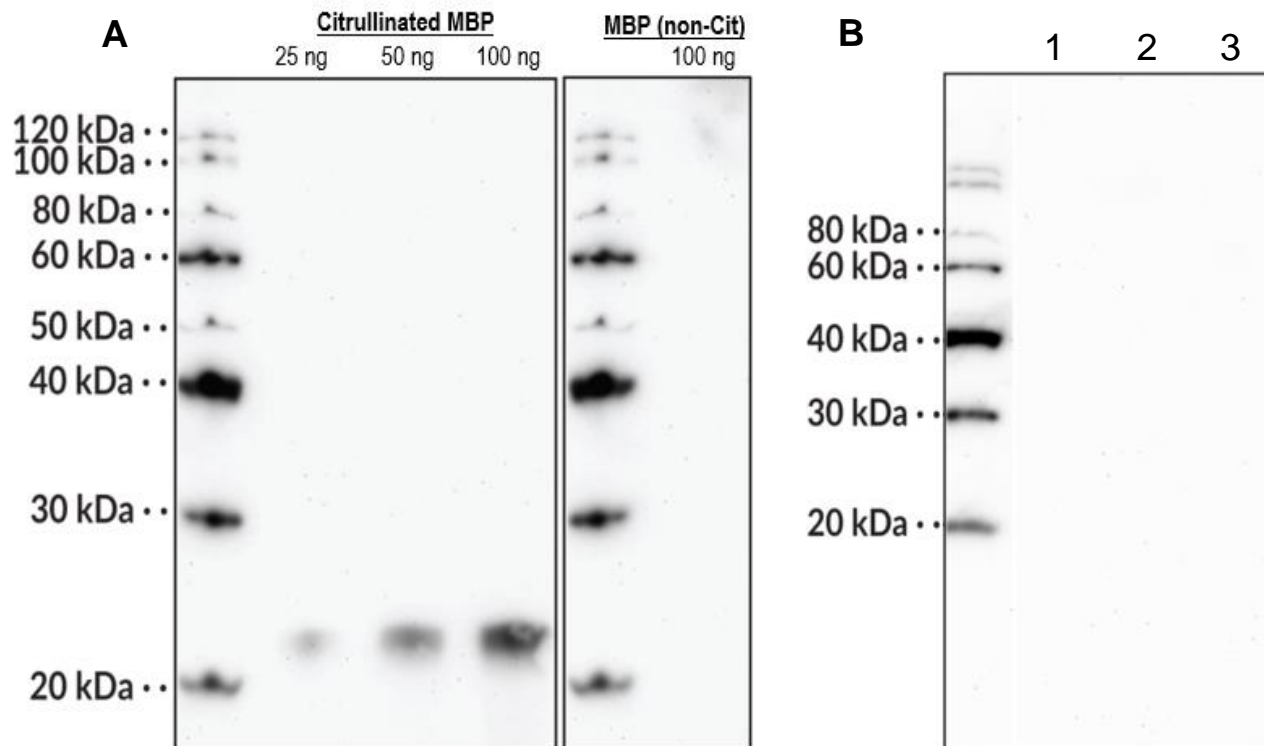
STORAGE CONDITIONS: Aliquot and store at -20 °C. Avoid repeated freeze-thaw cycles

APPLICATIONS: Western Blotting and ELISA: 1:200 dilution

This information is only intended as a guide. The optimal dilutions must be determined by the user



ELISA plates were coated with citrullinated MBP (yellow), citrullinated MBP peptide (orange), and uncitrullinated or unrelated peptides to demonstrate specificity of Anti-Citrullinated Myelin Basic Protein Polyclonal Antibody.



Western blot analysis of **A**) citrullinated (left) myelin basic protein at various loads versus non-citrullated (right) myelin basic protein (100 ng); and **B**) 200 ng sample loads of 1-carbamylated α -enolase, 2-carbamylated vimentin, and 3-citrullinated fibrinogen to demonstrate the specificity of Anti-Citrullinated Myelin Basic Protein Polyclonal Antibody.

RELATED PRODUCTS:

Citrullinated Fibrinogen Monoclonal Antibody (Clone 10E9.3) (Cat. No. A2316)
 Anti-PAD4 Monoclonal Antibody (Clone 11F9) (Cat. No. A2314)
 Histone H3 (Citrullinated R2, R8, R17) Antibody (Cat. No. A2318)
 Anti-PAD4 Polyclonal Antibody (Cat. No. A2324)
 Citrullinated Histone H1.4 (R53) Antibody (Cat. No. A2317)

FOR RESEARCH USE ONLY! Not to be used on humans.