

Anti-PAD1 Monoclonal Antibody (Clone 6B4)

rev 04/21

CATALOG NO.: **A2311-50 (50 µg)**
A2311-100 (100 µg)

BACKGROUND DESCRIPTION: Protein arginine deiminases (PADs) are guanidine-modifying enzymes that catalyze the post-translational modification of target proteins by converting arginine to citrulline. Excessive citrullination of proteins may result in disease states. PAD1 is expressed in uterus and throughout the epidermis, and is involved in the late stages of epidermal differentiation and possibly hair follicle formation. Disruption in PAD1 activity is associated with certain skin diseases and Laing Distal Myopathy.

ALTERNATE NAMES: Peptidyl Arginine Deiminase 1; PDI1; Peptidylarginine Deiminase I; HPAD10; PDI; PADI1

ANTIBODY TYPE: Monoclonal

CLONE: 6B4

HOST/ISOTYPE: Mouse / IgG2b

IMMUNOGEN: Recombinant human PAD1 protein

PURIFICATION: Protein G purification

MOLECULAR WEIGHT: 74 kDa.

FORM: Liquid

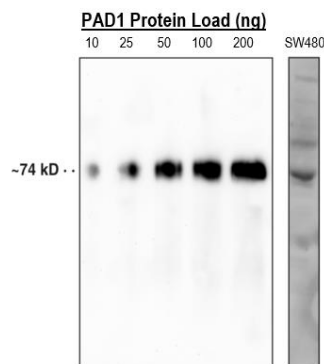
FORMULATION: In PBS, pH 7.2, 50% glycerol, 0.1% BSA, 0.02% sodium azide

SPECIES REACTIVITY: Human

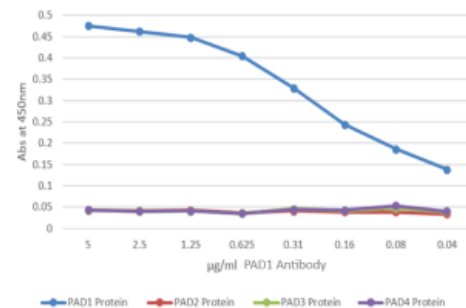
STORAGE CONDITIONS: Aliquot and store at -20 °C. Avoid repeated freeze-thaw cycles

APPLICATIONS: Western blot (1:1000 dilution); ELISA (1:1000 dilution)

This information is only intended as a guide. The optimal dilutions must be determined by the user



Western blot analysis of recombinant PAD1 protein (at different protein loads) and SW480 cell lysate using PAD1 monoclonal antibody



ELISA verifies PAD1 monoclonal antibody recognizes only PAD1 (blue) and not PAD2, PAD3, or PAD4

RELATED PRODUCTS:

Anti-PAD1 Polyclonal Antibody (Cat. No. A2321)
 Anti-PAD2 Monoclonal Antibody (Clone 9F7) (Cat. No. A2312)
 Anti-PAD3 Monoclonal Antibody (Clone 4E5) (Cat. No. A2313)
 Anti-PAD4 Monoclonal Antibody (Clone 11F9) (Cat. No. A2314)
 Anti-PAD6 Monoclonal Antibody (Clone 4B7) (Cat. No. A2315)

FOR RESEARCH USE ONLY! Not to be used on humans.