

# Anti-CD161/KLRB1 Antibody

**CATALOG NO.:** **A2309-50 50 µg.**  
**A2309-100 100 µg.**

**BACKGROUND DESCRIPTION:** The KLRB1 protein, also known as CD161, is expressed by natural killer cells and is involved in the regulation of NK cell function. Certain subpopulations of T cells also express CD161 on their surface. CD161 inhibits NK cell cytotoxicity, and T cells that express CD161 may be linked to inflammation and immunological disorders. Expression of CD161 on T cells has been linked to glioma and other human cancer types. Inactivation of CD161 has been shown recently to mediate the killing of glioma cells and exact anti-tumor functions, making it an intriguing therapeutic target.

**ALTERNATE NAMES:** Killer Cell Lectin Like Receptor B1; NKR-P1A; CLEC5B; HNKR-P1A; NKR-P1; NKRP1A; NKR

**ANTIBODY TYPE:** Rabbit Polyclonal

**HOST/ISOTYPE:** Rabbit / IgG

**IMMUNOGEN:** Fusion protein of human KLRB1

**PURIFICATION:** Antigen affinity purification

**MOLECULAR WEIGHT:** 25.4 kDa predicted; 30 kDa observed

**FORM:** Liquid

**FORMULATION:** In PBS pH 7.4, 0.05% sodium azide, 40% glycerol

**SPECIES REACTIVITY:** Human, Mouse

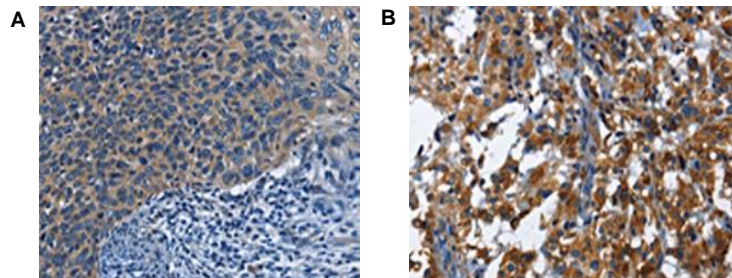
**STORAGE CONDITIONS:** Aliquot and store at -20 °C. Avoid repeated freeze-thaw cycles

**APPLICATIONS:** Western Blot (WB): 1:500 to 1:2000 dilution; Immunohistochemistry (IHC): 1:50 to 1:200 dilution  
 ELISA: 1:2000 to 1:5000 dilution

**This information is only intended as a guide. The optimal dilutions must be determined by the user**



Western blot analysis of (left lane) mouse kidney tissue and (right lane) human fetal liver tissue samples using anti-CD161/KLRB1 antibody



Immunohistochemistry of (A) human cervical cancer and (B) human thyroid cancer tissue samples using anti-CD161/KLRB1 antibody

## RELATED PRODUCTS:

Anti-CD162 Antibody (PSGL1/1601) (Cat. No. A1477)  
 Anti-CD160 Antibody (Cat. No. A1072)  
 Anti-CD244 Antibody (2B4.69) (Cat. No. A1073)  
 CD163 Rabbit Monoclonal Antibody (Clone# 7B2), For IHC (Cat. No. A2304)  
 CD163 Rabbit Polyclonal Antibody, for Western (Cat. No. A2301)

**FOR RESEARCH USE ONLY! Not to be used on humans.**