

# IFITM3 Antibody

**CATALOG NO.:** **A2306-50 (50 µg)**  
**A2306-100 (100 µg)**

**BACKGROUND DESCRIPTION:** Interferon induced transmembrane protein 3 (IFITM3) is an antiviral protein which inhibits viral entry into host cells. IFITM3 disrupts intracellular cholesterol homeostasis, which may lead to inactivated newly enveloped viruses which bud from infected cells with a cholesterol depleted membrane. IFITM3 is active against many viruses, including influenza A, Ebola, Dengue, West Nile, HIV-1, and SARS-CoV. While known to restrict infection by SARS-CoV-2, certain mutations of residues within IFITM3 may convert the protein into an enhancer of infection, making this protein an intriguing marker for COVID-19 research.

**ALTERNATE NAMES:** Interferon induced transmembrane protein 3; DSPA2b; Interferon inducible protein 1-8U; IP15

**ANTIBODY TYPE:** Rabbit Polyclonal

**HOST/ISOTYPE:** Rabbit / IgG

**IMMUNOGEN:** KLH conjugated synthetic peptide from the N-terminus of human IFITM3

**PURIFICATION:** Protein A purification followed by peptide affinity purification

**MOLECULAR WEIGHT:** 14.6 kDa

**FORM:** Liquid

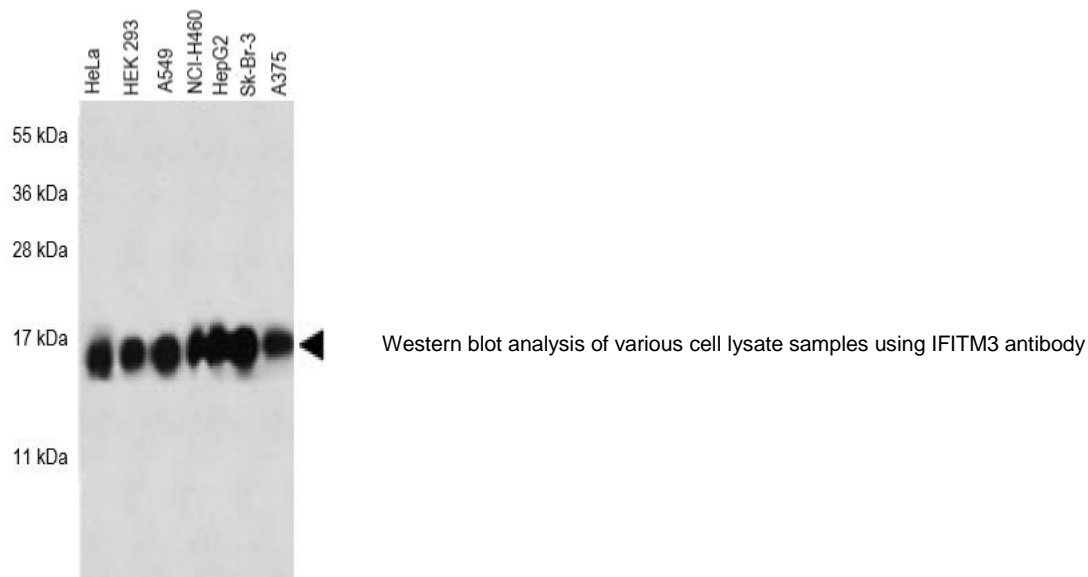
**FORMULATION:** In PBS with 0.09% (W/V) sodium azide

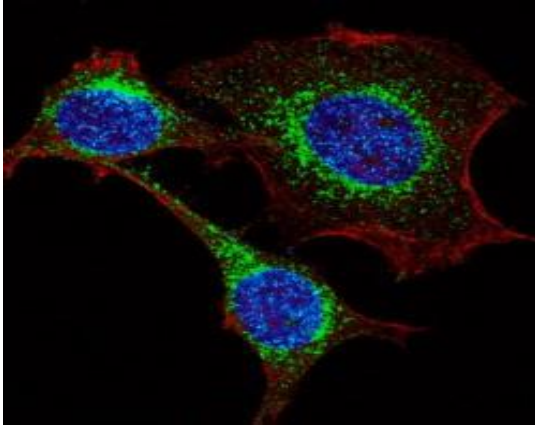
**SPECIES REACTIVITY:** Human, Mouse

**STORAGE CONDITIONS:** Store at -20 °C. Avoid repeated freeze-thaw cycles

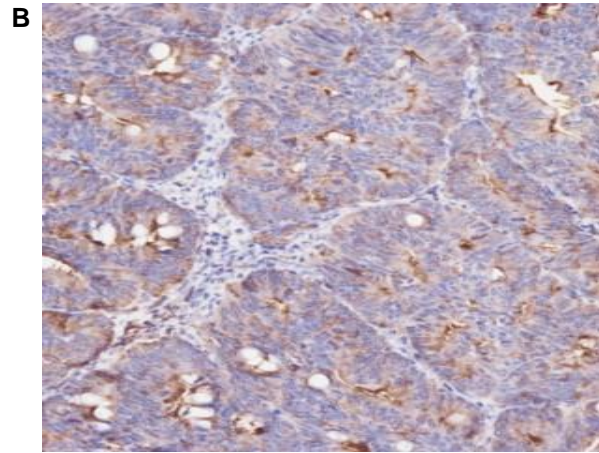
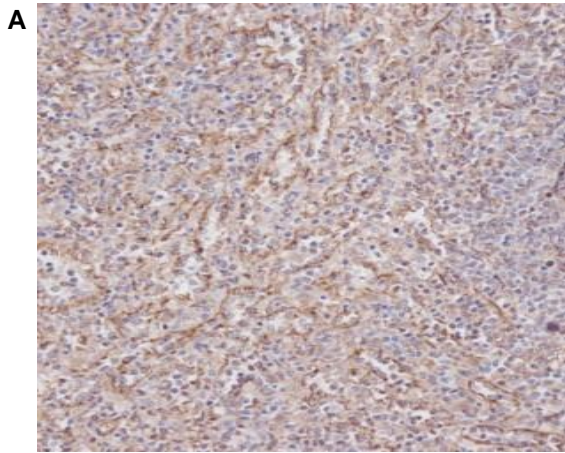
**APPLICATIONS:** Western Blot (WB): 1:1000 dilution; Immunohistochemistry (IHC): 1:100 dilution  
 Immunofluorescence (IF): 1:100 to 1:500 dilution

**This information is only intended as a guide. The optimal dilutions must be determined by the user**





Immunofluorescence with IFITM3 antibody. Confocal image shows IFITM3 (green), actin (red), and nuclei (DAPI, blue)



IHC analysis of human (A) spleen and (B) colon carcinoma tissue samples using IFITM3 antibody

**RELATED PRODUCTS:**

Anti-IFITM1 Antibody (Cat. No. A1932)  
TLR3 Polyclonal Antibody (Cat. No. 3445)  
Anti-IFN- $\gamma$  (Emapalumab), Human IgG1 Antibody (Cat. No. A2270)  
TLR5 (Toll-like receptor 5) Polyclonal Antibody (Cat. No. 3555)  
Anti-IFNAR1 Antibody (Cat. No. A2288)

**FOR RESEARCH USE ONLY! Not to be used on humans.**