

# IFITM2 Antibody

**CATALOG NO.:** **A2305-50 (50 µg)**  
**A2305-100 (100 µg)**

**BACKGROUND DESCRIPTION:** Interferon induced transmembrane protein 2 (IFITM2) is an antiviral protein which inhibits viral entry into host cells. IFITM2 is active against many viruses, including influenza A, Ebola, Dengue, West Nile, HIV-1, and SARS-CoV. IFITM2 can induce cell cycle arrest and also mediates apoptosis by caspase activation in a p53-independent manner.

**ALTERNATE NAMES:** Interferon induced transmembrane protein 2; DSPA2c; Interferon inducible protein 1-8D

**ANTIBODY TYPE:** Rabbit Polyclonal

**HOST/ISOTYPE:** Rabbit / IgG

**IMMUNOGEN:** KLH conjugated synthetic peptide from the N-terminus of human IFITM2

**PURIFICATION:** Protein A purification followed by peptide affinity purification

**MOLECULAR WEIGHT:** 14.6 kDa

**FORM:** Liquid

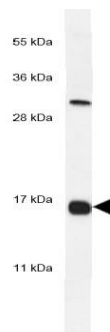
**FORMULATION:** In PBS with 0.09% (W/V) sodium azide

**SPECIES REACTIVITY:** Human

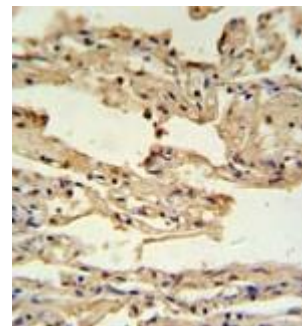
**STORAGE CONDITIONS:** Store at -20 °C. Avoid repeated freeze-thaw cycles

**APPLICATIONS:** Western Blot (WB): 1:1000 dilution; Immunohistochemistry (IHC): 1:50 to 1:100 dilution

**This information is only intended as a guide. The optimal dilutions must be determined by the user**



Western blot analysis of NCI-H460 cell lysate sample using IFITM2 antibody



IHC analysis of human lung carcinoma tissue sample using IFITM2 antibody

## RELATED PRODUCTS:

Anti-IFN-γ (Emapalumab), Human IgG1 Antibody (Cat. No. A2270)  
 Anti-IFITM1 Antibody (Cat. No. A1932)  
 Anti-IFNAR1 Antibody (Cat. No. A2288)  
 TLR3 Polyclonal Antibody (Cat. No. 3445)  
 TLR5 (Toll-like receptor 5) Polyclonal Antibody (Cat. No. 3555)

**FOR RESEARCH USE ONLY! Not to be used on humans.**