

Anti-FGF21 Antibody (Clone# ARC0865)

10/20

CATALOG NO.: A2237-100 (100 µl)

BACKGROUND DESCRIPTION: Fibroblast growth factor 21 (FGF21) is a pleiotropic hormone that belongs to the fibroblast growth factor family that has multifaceted roles in biological processes such as angiogenesis, metabolism, embryonic development, and tumor growth and invasion. FGF21 is expressed in multiple tissues such as the liver, adipose tissue, pancreas, brain, and gastrointestinal tract. FGF21 is known as a major regulator of glucose and lipid metabolism. Under nutritional stress conditions (fasting, caloric restriction, ketogenic diets), FGF21 stimulates the production of glucose in the liver via gluconeogenesis. In the adipose tissue, it increases the uptake of glucose by stimulating the expression of GLUT1. FGF21 promotes weight loss without decreasing the intake of food, decreases the fat content in the liver, and reduces triglyceride and glucose concentrations in the blood plasma. Due to its beneficial role in energy homeostasis and metabolism, FGF21 has been proposed as a therapeutic target for metabolic disorders.

ALTERNATE NAMES: Fibroblast Growth Factor 21, FGF-21, FGF21, FGF 21

ANTIBODY TYPE: Monoclonal

CLONE: ARC0865

HOST/ISOTYPE: Rabbit / IgG

IMMUNOGEN: Synthetic peptide derived from human FGF21

MOLECULAR WEIGHT: 16 kDa

PURIFICATION: Affinity purified

FORM: Liquid

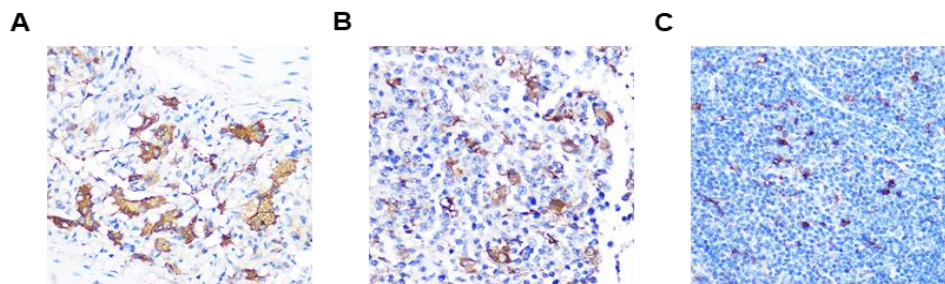
FORMULATION: In PBS with 0.02% sodium azide, 0.05% BSA, 50% glycerol, pH 7.3

SPECIES REACTIVITY: Human, Mouse, Rat

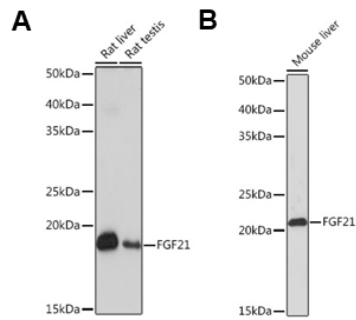
STORAGE CONDITIONS: Store at -20°C. Avoid freeze/thaw cycles

APPLICATIONS AND USAGE: WB 1:500 - 1:2000, IHC 1:50 - 1:200

This information is only intended as a guide. The optimal dilutions must be determined by the user



Immunohistochemical analysis of paraffin embedded rat lung (A), human thyroid (B) and mouse spleen (C) tissue using Anti-FGF21 antibody (Clone# ARC0865) at dilution of 1:100 (Magnification: 40x).



Western Blot analysis of rat liver, testis (A) and mouse liver (B) using Anti-FGF21 antibody (Clone# ARC0865). 25 µg lysates were loaded per lane. Membrane was blocked with 3% non-fat dry milk in TBST. Primary antibody dilution used was 1:1000. HRP-conjugated Goat Anti-Rabbit IgG (H+L) was used as secondary antibody at a dilution of 1:10,000. Detection was performed using ECL Basic Kit. Exposure time was 30s.

RELATED PRODUCTS:

SIRT1 Antibody (6137)

PPAR-alpha Antibody (3585)

DPPIV (Human) Antibody (6693)

FGF-19 Antibody (5542R)

FOR RESEARCH USE ONLY! Not to be used on humans.