

# Anti-Galectin-3 Antibody (Clone# 3F2E2)

10/20

CATALOG NO.: A2232-100 (100 µg)

**BACKGROUND DESCRIPTION:** This gene encodes a member of the galectin family of carbohydrate-binding proteins. Members of this protein family have an affinity for beta-galactosides. The encoded protein is characterized by an N-terminal proline-rich tandem repeat domain and a single C-terminal carbohydrate recognition domain. This protein can self-associate through the N-terminal domain allowing it to bind to multivalent saccharide ligands. This protein localizes to the extracellular matrix, the cytoplasm, and the nucleus. This protein plays a role in numerous cellular functions including apoptosis, innate immunity, cell adhesion, and T-cell regulation. The protein exhibits antimicrobial activity against bacteria and fungi. Alternate splicing results in multiple transcript variants.

**ALTERNATE NAMES:** L31, GAL3, MAC2, CBP35, GALBP, GALIG, LGALS2, LGALS3

**ANTIBODY TYPE:** Monoclonal

**CLONE:** 3F2E2

**HOST/ISOTYPE:** Mouse / IgG2b

**IMMUNOGEN:** Recombinant Human Galectin 3

**MOLECULAR WEIGHT:** 27 kDa

**PURIFICATION:** Protein G purified

**FORM:** Liquid

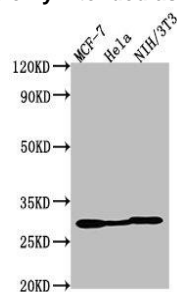
**FORMULATION:** In 0.01 M PBS, pH 7.4, 50% Glycerol, 0.03% proclin 300

**SPECIES REACTIVITY:** Human, Mouse

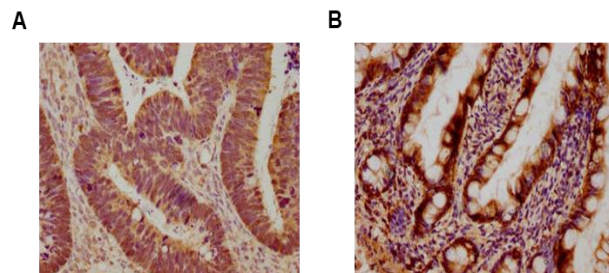
**STORAGE CONDITIONS:** Store at -20°C. Avoid freeze/thaw cycles

**APPLICATIONS AND USAGE:** WB (1:500-1:5000), IHC (1:50-1:500)

This information is only intended as a guide. The optimal dilutions must be determined by the user



Western blot analysis of MCF-7, HELA, NIH/3T3 whole cell lysate using Anti-Galectin-3 antibody (Clone# 3F2E2). Primary antibody dilution used was 1:2000. Goat Anti-Mouse IgG secondary antibody dilution used was 1:50,000.



Immunohistochemical analysis of paraffin embedded human ovarian cancer (A) and human small intestine (B) using Anti-Galectin-3 antibody (Clone# 3F2E2).

## RELATED PRODUCTS:

p44/42 MAPK (Erk1/2) Antibody (3085R)  
 Anti-ACTH Antibody (SPM501) (A1418)  
 Anti-PGR Antibody (A1860)  
 Anti-STAT3 Antibody (A1670)

**FOR RESEARCH USE ONLY! Not to be used on humans.**