

# Anti-Omentin Antibody (Clone# ITLN1/4061)

10/20

**CATALOG NO.:** A2231-100 (100 µg)

**BACKGROUND DESCRIPTION:** Human intelectin-1 (ITLN-1) is a novel identified galactose binding lectin that is usually expressed in the heart, small intestine, and colon. In normal tissues, human intelectin-1 was mainly secreted from gastrointestinal goblet cells along with mucus into the intestinal lumen, and it was also expressed, to a lesser extent, in mesothelial cells and urinary epithelial cells. It is overexpressed in human malignant pleural mesothelioma (MPM). In contrast, sarcomatoid-type MPMs, biphasic MPMs, and poorly differentiated MPMs are rarely positive for intelectin-1, and it is not expressed in other cancers, except in mucus-producing adenocarcinoma.

**ALTERNATE NAMES:** HL1, LFR, HL-1, INTL, ITLN, hIntL, ITLN1, intelectin 1, Intelectin-1, ITLN-1, FLJ20022

**ANTIBODY TYPE:** Monoclonal

**CLONE:** ITLN1/4061

**HOST/ISOTYPE:** Mouse / IgG2b, kappa

**IMMUNOGEN:** Recombinant fragment (around aa 16-141) of human Intelectin-1 (ITLN1) protein

**PURIFICATION:** Protein A/G purified

**FORM:** Liquid

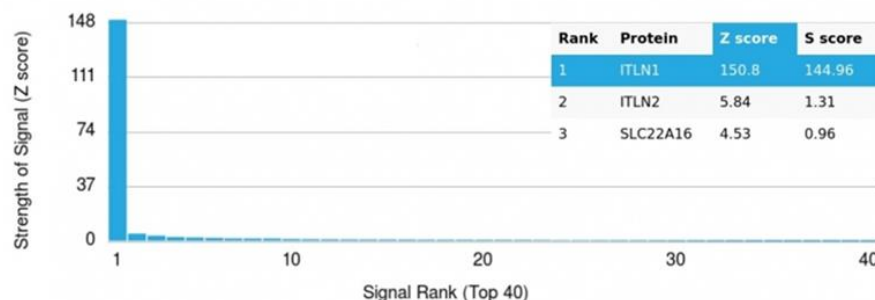
**FORMULATION:** In 10 mM PBS

**SPECIES REACTIVITY:** Human

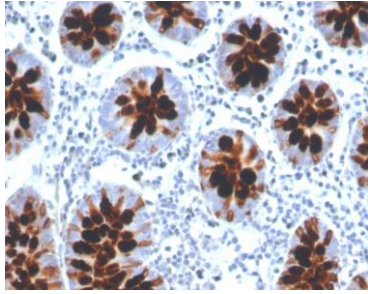
**STORAGE CONDITIONS:** Store at -20°C. Avoid freeze/thaw cycles

**APPLICATIONS AND USAGE:** IHC (1-2 µg/ml)

This information is only intended as a guide. The optimal dilutions must be determined by the user



Protein Array analysis of > 19,000 full-length human proteins on HuProt™ array using the Anti-Omentin antibody (Clone# ITLN1/4061). Protein array data is represented in the form of the Z-score and S-score. Z-score denotes signal strength of a monoclonal antibody (in conjugation with fluorescently-tagged anti-IgG secondary antibody) which it produces when binding to a particular protein on an array. S-score denotes the specificity of a monoclonal antibody relative to the target protein. S-score is calculated as the difference between the Z-scores. If the S-score is > 2.5, then the monoclonal antibody is specific to its target protein of interest.



Immunohistochemical analysis of paraffin embedded formalin fixed human colon using Anti-Omentin antibody (Clone# ITLN1/4061).

**RELATED PRODUCTS:**

Anti-NAMPT Antibody (14A5) (A1301)

AKT1 Antibody (CT) (6744)

Leptin Antibody (5368)

AMPK $\alpha$  Antibody (3113)

***FOR RESEARCH USE ONLY! Not to be used on humans.***