

# Anti-PON1 Antibody (Clone# ARC2001)

10/20

**CATALOG NO.:** A2229-100 (100 µl)

**BACKGROUND DESCRIPTION:** This gene encodes a member of the paraoxonase family of enzymes and exhibits lactonase and ester hydrolase activity. Following synthesis in the kidney and liver, the enzyme is secreted into the circulation, where it binds to high-density lipoprotein (HDL) particles and hydrolyzes thiolactones and xenobiotics, including paraoxon, a metabolite of the insecticide parathion. Polymorphisms in this gene may be associated with coronary artery disease and diabetic retinopathy. The gene is found in a cluster of three related paraoxonase genes on chromosome 7.

**ALTERNATE NAMES:** Paraoxonase 1, PON 1, K-45, ESA, PON, EC 3.1.1.81, EC 3.1.1.2, EC 3.1.8.1, MVCD5, PON1

**ANTIBODY TYPE:** Monoclonal

**CLONE:** ARC2001

**HOST/ISOTYPE:** Rabbit / IgG

**IMMUNOGEN:** Synthetic peptide derived from human PON1

**MOLECULAR WEIGHT:** 40 kDa

**PURIFICATION:** Affinity purified

**FORM:** Liquid

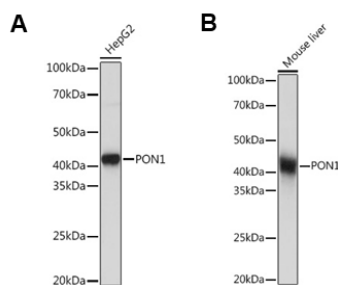
**FORMULATION:** In PBS with 0.02% sodium azide, 50% glycerol, pH 7.3

**SPECIES REACTIVITY:** Human, Mouse, Rat

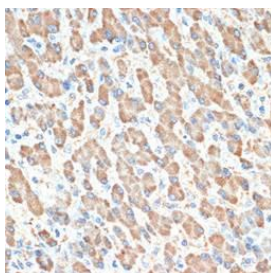
**STORAGE CONDITIONS:** Store at -20°C. Avoid freeze/thaw cycles

**APPLICATIONS AND USAGE:** WB 1:500 - 1:2000, IHC 1:50 - 1:200, IF 1:50 - 1:200

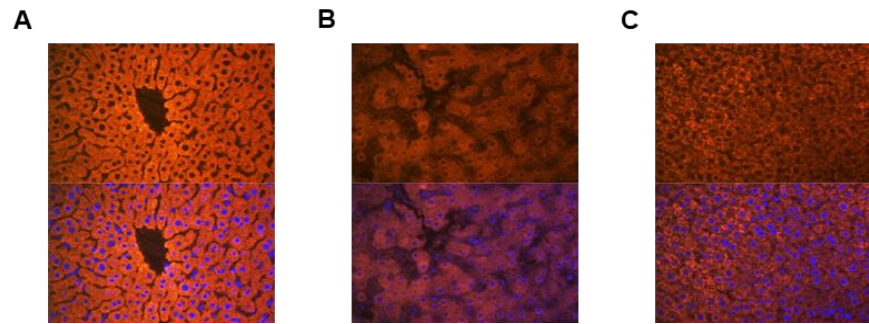
This information is only intended as a guide. The optimal dilutions must be determined by the user



Western Blot analysis of HepG2 cells (A) and mouse liver (B) using Anti-PON1 antibody (Clone# ARC2001). 25 µg of lysates were loaded per lane. The membrane was blocked with 3% non-fat dry milk in TBST. Primary antibody dilution used was 1:1000. HRP Goat Anti-Rabbit IgG (H+L) was used as secondary antibody at a dilution of 1:10,000. Detection was performed using ECL Basic Kit. Exposure time was 3 s for Fig (A) and 1 s for Fig (B).



Immunohistochemical analysis of paraffin embedded human liver tissue using Anti-PON1 antibody (Clone# ARC2001) at dilution of 1:100 (Magnification: 40x).



Immunofluorescence analysis of mouse liver (A), human liver (B), and rat liver (C) tissues using Anti-PON1 antibody (Clone# ARC2001) at dilution of 1:100 (Magnification: 40x). Blue: DAPI for nuclear staining.

**RELATED PRODUCTS:**

ApoE Antibody (CT) (6720)

ApoA1 Antibody (5693)

c-Jun Antibody (3702)

JNK Antibody (3701)

***FOR RESEARCH USE ONLY! Not to be used on humans.***