

Anti-TIMP2 recMAb™ Antibody

08/20

CATALOG NO.: A2185-100 (100 µg)

BACKGROUND DESCRIPTION: This gene is a member of the TIMP gene family. The proteins encoded by this gene family are natural inhibitors of the matrix metalloproteinases, a group of peptidases involved in degradation of the extracellular matrix. In addition to an inhibitory role against metalloproteinases, the encoded protein has a unique role among TIMP family members in its ability to directly suppress the proliferation of endothelial cells. As a result, the encoded protein may be critical to the maintenance of tissue homeostasis by suppressing the proliferation of quiescent tissues in response to angiogenic factors, and by inhibiting protease activity in tissues undergoing remodeling of the extracellular matrix.

ALTERNATE NAMES: DDC8, CSC-21K, Metalloproteinase inhibitor 2, TIMP metallopeptidase inhibitor 2, TIMP-2, Tissue Inhibitor of Metalloproteinase 2

ANTIBODY TYPE: Monoclonal

CLONE: rTIMP2/2335

CONCENTRATION: 1 mg/ml

HOST/ISOTYPE: Mouse / IgG1, kappa

IMMUNOGEN: Synthetic peptide targeting residues around aa 40-70 at the N-terminus of human TIMP2

MOLECULAR WEIGHT: 21 kDa

PURIFICATION: Protein A/G purified

FORM: Liquid

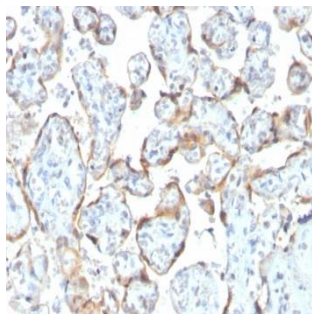
FORMULATION: In 10 mM PBS

SPECIES REACTIVITY: Human, Mouse, Rat, Rabbit, Bovine, Guinea pig, Zebrafish

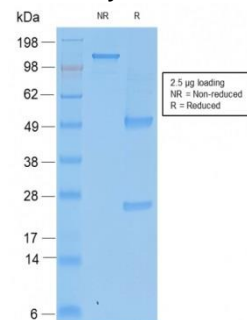
STORAGE CONDITIONS: Store at -20°C. Avoid freeze/thaw cycles

APPLICATIONS AND USAGE: IHC (1-2 µg/ml)

This information is only intended as a guide. The optimal dilutions must be determined by the user



Immunohistochemical analysis of paraffin embedded formalin fixed human placenta using Anti-TIMP2 recMAb™ antibody.



SDS-PAGE Analysis to confirm the purity and integrity of the Anti-TIMP2 recMAb™ antibody.

RELATED PRODUCTS:

ApoC2 Antibody (Center) (6718)
 MMP-12 Antibody (3532R)
 MMP-2 Antibody (5562R)
 ADAM10 Antibody (3201)

FOR RESEARCH USE ONLY! Not to be used on humans.