

# Anti-IL-1 $\beta$ , Human IgG1 Antibody

rev 11/21

CATALOG NO.: A2144-100 (100  $\mu$ g)

**BACKGROUND DESCRIPTION:** The research-grade biosimilar is a recombinant human IgG1 kappa monoclonal antibody that is produced in murine Sp2/0-Ag14 cell line. This antibody binds to human IL-1 $\beta$ . IL-1 $\beta$  is produced by activated macrophages, and is an important mediator of the inflammatory response. IL-1 $\beta$  is involved in a variety of cellular activities including cell proliferation, differentiation, and apoptosis.

**ALTERNATE NAMES:** IL-1, IL1F2, IL1beta, IL1-BETA, IL1B

**ANTIBODY TYPE:** Monoclonal

**HOST/ISOTYPE:** Recombinant / IgG1, kappa

**SOURCE:** CHO cells

**IMMUNOGEN:** Human IL-1 $\beta$

**PURIFICATION:** Protein A purified

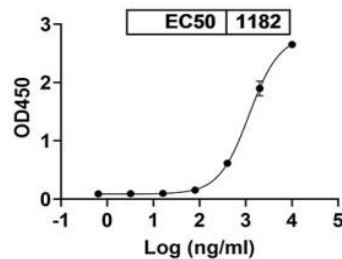
**FORM:** Liquid

**FORMULATION:** In PBS, pH 7.5

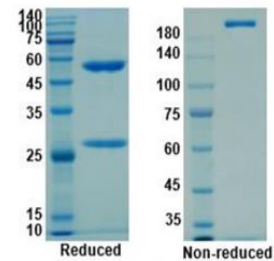
**SPECIES REACTIVITY:** Human

**STORAGE CONDITIONS:** Store at -80 °C. Avoid freeze/thaw cycles

This information is only intended as a guide. The optimal dilutions must be determined by the user



Direct ELISA shows that Anti-IL-1 $\beta$ , Human IgG1 Antibody can bind to immobilized human IL-1 $\beta$ . EC50 = 1182 ng/ml



SDS-PAGE Analysis to assess purity and integrity of Anti-IL-1 $\beta$ , Human IgG1 Antibody

## RELATED PRODUCTS:

Anti-IL-6R $\alpha$ , Human IgG1 Antibody (A2133)  
 Anti-PD-1 humanized Antibody (A2131)  
 Anti-IL-2R alpha, Human IgG1 Antibody (A1099)  
 Anti-IL-2R alpha (CD25), Human IgG1 Antibody (A1098)  
 Anti-IL-6 receptor, Human IgG1 Antibody (A1447)

**FOR RESEARCH USE ONLY! Not to be used on humans.**