

Anti-Src (KO Validated) Antibody

05/20

CATALOG NO.: A2123-100 (100 µl)

BACKGROUND DESCRIPTION: This gene is highly similar to the v-src gene of Rous sarcoma virus. This proto-oncogene may play a role in the regulation of embryonic development and cell growth. The protein encoded by this gene is a tyrosine-protein kinase whose activity can be inhibited by phosphorylation by c-SRC kinase. Mutations in this gene could be involved in the malignant progression of colon cancer. Two transcript variants encoding the same protein have been found for this gene.

ALTERNATE NAMES: ASV; SRC1; THC6; c-SRC; p60-Src; SRC

ANTIBODY TYPE: Monoclonal

HOST/ISOTYPE: Rabbit / IgG

IMMUNOGEN: Synthetic peptide derived from human Src

MOLECULAR WEIGHT: 60 kDa

PURIFICATION: Affinity purified

FORM: Liquid

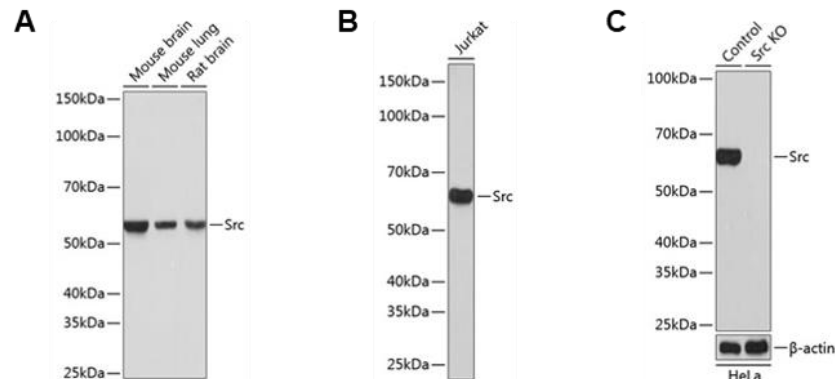
FORMULATION: In PBS with 0.02% sodium azide, 50% glycerol, pH 7.3

SPECIES REACTIVITY: Human, Mouse, Rat

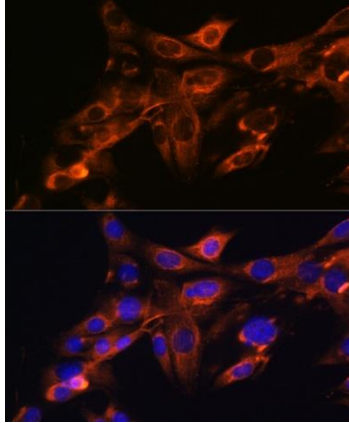
STORAGE CONDITIONS: Store at -20°C. Avoid freeze / thaw cycles

APPLICATIONS AND USAGE: WB 1:500 - 1:2000, IF 1:50 - 1:200

This information is only intended as a guide. The optimal dilutions must be determined by the user



Western blot analysis of various tissue extracts (A), Jurkat cells (B), control and Src KO cells (B) using Anti-Src (KO Validated) antibody at 1:1000 dilution. Secondary antibody used was HRP Goat Anti-Rabbit IgG (H+L) at 1:10000 dilution. 25 µg of lysates/proteins were loaded per lane. 3% nonfat dry milk in TBST was used as blocking buffer. ECL Enhanced Kit was used for detection. Exposure time was 1 sec for Blot (A) and 1 min for Blots (B) & (C).



Immunofluorescence analysis of NIH-3T3 cells using Anti-Src (KO Validated) antibody at dilution of 1:100 (Magnification: 40x). Blue: DAPI for nuclear staining.

RELATED PRODUCTS:

Anti-CD31 / PECAM-1 Antibody (C31.7) (A1496)

EGFR Antibody (3782)

PAK2 Antibody (3443)

Anti-HER2 (c-erbB-2), Rabbit Monoclonal Antibody (A1134)

FOR RESEARCH USE ONLY! Not to be used on humans.