

Anti-IRF3 (KO Validated) Antibody

CATALOG NO.: A2122-100 (100 µl)

BACKGROUND DESCRIPTION: This gene encodes a member of the interferon regulatory transcription factor (IRF) family. The encoded protein is found in an inactive cytoplasmic form that upon serine/threonine phosphorylation forms a complex with CREBBP. This complex translocates to the nucleus and activates the transcription of interferons alpha and beta, as well as other interferon-induced genes. Alternatively spliced transcript variants encoding multiple isoforms have been observed for this gene.

ALTERNATE NAMES: IIAE7; IRF3

ANTIBODY TYPE: Monoclonal

HOST/ISOTYPE: Rabbit / IgG

IMMUNOGEN: Synthetic peptide derived from human IRF3

MOLECULAR WEIGHT: 57 kDa

PURIFICATION: Affinity purified

FORM: Liquid

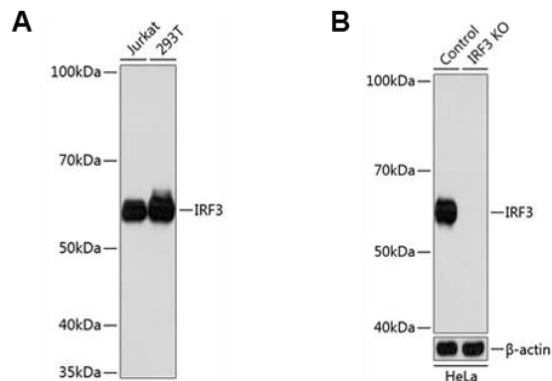
FORMULATION: In PBS with 0.02% sodium azide, 50% glycerol, pH 7.3

SPECIES REACTIVITY: Human, Mouse

STORAGE CONDITIONS: Store at -20°C. Avoid freeze / thaw cycles

APPLICATIONS AND USAGE: WB 1:500 - 1:2000

This information is only intended as a guide. The optimal dilutions must be determined by the user



Western blot analysis of various cell lines (A), control and IRF3 KO cells (B) using Anti-IRF3 (KO Validated) antibody at 1:1000 dilution. Secondary antibody used was HRP Goat Anti-Rabbit IgG (H+L) at 1:10000 dilution. 25 µg of lysates/proteins were loaded per lane. 3% nonfat dry milk in TBST was used as blocking buffer. ECL Enhanced Kit was used for detection and exposure time was 3 min.

RELATED PRODUCTS:

Anti-Akt1 Rabbit Monoclonal Antibody (A1117)
 IRF3 Antibody (3877)
 GAPDH Antibody (3777R)
 Anti-NF-κB p65 Antibody (Clone#AMC0222) (A2000)

FOR RESEARCH USE ONLY! Not to be used on humans.