

Anti-GDF-15 Antibody

CATALOG NO.: A2038-100 (100 µl)

BACKGROUND DESCRIPTION: This gene encodes a secreted ligand of the TGF-beta (transforming growth factor-beta) superfamily of proteins. Ligands of this family bind various TGF-beta receptors leading to recruitment and activation of SMAD family transcription factors that regulate gene expression. The encoded preproprotein is proteolytically processed to generate each subunit of the disulfide-linked homodimer. The protein is expressed in a broad range of cell types, acts as a pleiotropic cytokine and is involved in the stress response program of cells after cellular injury. Increased protein levels are associated with disease states such as tissue hypoxia, inflammation, acute injury and oxidative stress.

ALTERNATE NAMES: MIC1; PDF; PLAB; PTGFB; Growth/differentiation factor 15; GDF-15; Macrophage inhibitory cytokine 1; MIC-1; NSAID-activated gene 1 protein; NAG-1; NSAID-regulated gene 1 protein; NRG-1; Placental TGF-beta; Placental bone morphogenetic protein; Prostate differentiation factor

ANTIBODY TYPE: Polyclonal

HOST/ISOTYPE: Rabbit / IgG

IMMUNOGEN: KLH-conjugated synthetic peptide targeting a sequence within the center region of human GDF15

MOLECULAR WEIGHT: 35 kDa

PURIFICATION: Affinity purified

FORM: Liquid

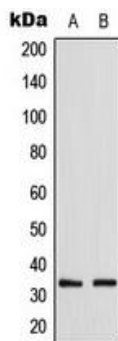
FORMULATION: In 0.42% Potassium phosphate; 0.87% NaCl; pH 7.3; 30% glycerol; and 0.01% sodium azide

SPECIES REACTIVITY: Human, Mouse, Monkey, Porcine

STORAGE CONDITIONS: Store at -20°C. Avoid freeze / thaw cycles

APPLICATIONS AND USAGE: WB 1:500 - 1:1000

Note: This information is only intended as a guide. The optimal dilutions must be determined by the user



Western blot analysis of GDF15 expression in HepG2 (A); NIH3T3 (B) whole cell lysates.

RELATED PRODUCTS:

Anti-BMP-2 Antibody (A1621)
 Anti-SMAD2/3 Antibody (A1214)
 Anti-TGF-β1 Antibody (A1456)
 Stat5 Antibody (3472)

FOR RESEARCH USE ONLY! Not to be used on humans.