

# Anti-FGF21 Antibody

**CATALOG NO.:** A2036-100 (100 µl)

**BACKGROUND DESCRIPTION:** This gene encodes a member of the fibroblast growth factor (FGF) family. FGF family members possess broad mitogenic and cell survival activities and are involved in a variety of biological processes. This protein is a secreted endocrine factor that functions as a major metabolic regulator. The encoded protein stimulates the uptake of glucose in adipose tissue.

**ALTERNATE NAMES:** Fibroblast growth factor 21; FGF-21

**ANTIBODY TYPE:** Polyclonal

**HOST/ISOTYPE:** Rabbit / IgG

**IMMUNOGEN:** Recombinant full-length protein of human FGF21

**MOLECULAR WEIGHT:** 16 kDa

**PURIFICATION:** Affinity purified

**FORM:** Liquid

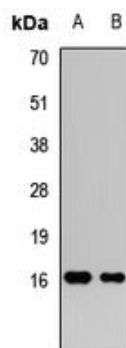
**FORMULATION:** In 0.42% Potassium phosphate; 0.87% NaCl; pH 7.3; 30% glycerol; and 0.01% sodium azide

**SPECIES REACTIVITY:** Human, Mouse

**STORAGE CONDITIONS:** Store at -20°C. Avoid freeze / thaw cycles

**APPLICATIONS AND USAGE:** WB 1:500 - 1:2000

**Note:** This information is only intended as a guide. The optimal dilutions must be determined by the user



Western blot analysis of FGF21 expression in LO2 (A); mouse pancreas (B) whole cell lysates.

## RELATED PRODUCTS:

Anti-AKT (PH domain) Rabbit Monoclonal Antibody (RM316) (A1835)

Anti-FGFR2 Antibody (A2014)

EGFR Antibody (3782)

FGF-2 Antibody (5039)

Anti-PDGFR-beta Antibody (A1994)

**FOR RESEARCH USE ONLY! Not to be used on humans.**