

Anti-CD31 Antibody

01/20

CATALOG NO.: A2027-100 (100 µl)

BACKGROUND DESCRIPTION: The protein encoded by this gene is found on the surface of platelets, monocytes, neutrophils, and some types of T-cells, and makes up a large portion of endothelial cell intercellular junctions. The encoded protein is a member of the immunoglobulin super family and is likely involved in leukocyte migration, angiogenesis, and integrin activation.

ALTERNATE NAMES: Platelet endothelial cell adhesion molecule; PECAM-1; EndoCAM; GPIIA'; PECA1; CD31

ANTIBODY TYPE: Polyclonal

HOST/ISOTYPE: Rabbit / IgG

IMMUNOGEN: KLH-conjugated synthetic peptide targeting a sequence within the center region of human CD31

MOLECULAR WEIGHT: 130 kDa

PURIFICATION: Affinity purified

FORM: Liquid

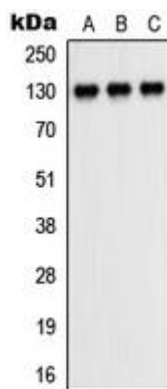
FORMULATION: In 0.42% Potassium phosphate; 0.87% NaCl; pH 7.3; 30% glycerol; and 0.01% sodium azide

SPECIES REACTIVITY: Human, Mouse, Rat

STORAGE CONDITIONS: Store at -20°C. Avoid freeze / thaw cycles

APPLICATIONS AND USAGE: WB 1:500 - 1:1000

Note: This information is only intended as a guide. The optimal dilutions must be determined by the user



Western blot analysis of CD31 expression in Jurkat (A); RAW264.7 (B); PC12 (C) whole cell lysates.

RELATED PRODUCTS:

ICAM-1 Antibody (3422R)
 CXCR4 Antibody (5541)
 Anti-STAT3 Antibody (A1670)
 GSK-3b Antibody (3494)

FOR RESEARCH USE ONLY! Not to be used on humans.