

Anti-Caspase-3 Antibody (Clone#AMC0213)

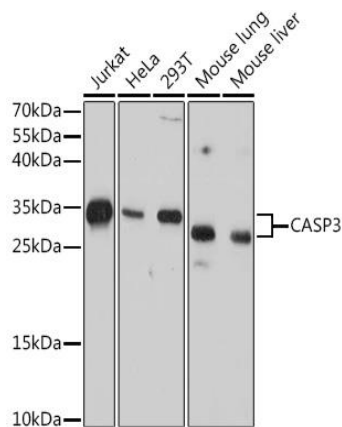
12/19

CATALOG NO.: A2015-100 (100 µl)

BACKGROUND DESCRIPTION: The protein encoded by this gene is a cysteine-aspartic acid protease that plays a central role in the execution-phase of cell apoptosis. The encoded protein cleaves and inactivates poly(ADP-ribose) polymerase while it cleaves and activates sterol regulatory element binding proteins as well as caspases 6, 7, and 9. This protein itself is processed by caspases 8, 9, and 10. It is the predominant caspase involved in the cleavage of amyloid-beta 4A precursor protein, which is associated with neuronal death in Alzheimer's disease.

| | |
|--------------------------------|--|
| ALTERNATE NAMES: | CPP32; CPP32B; SCA-1; Active Caspase 3; CASP3; active Caspase-3; Caspase 3; Caspase-3 p12; caspase-3 |
| ANTIBODY TYPE: | Monoclonal |
| HOST/ISOTYPE: | Mouse / IgG |
| IMMUNOGEN: | Recombinant protein of human Caspase-3 |
| MOLECULAR WEIGHT: | 32 kDa |
| PURIFICATION: | Affinity purified |
| FORM: | Liquid |
| FORMULATION: | In PBS with 0.02% sodium azide, 50% glycerol, pH7.3 |
| SPECIES REACTIVITY: | Human, Mouse |
| STORAGE CONDITIONS: | Store at -20°C. Avoid freeze / thaw cycles |
| APPLICATIONS AND USAGE: | WB 1:500 - 1:2000 |

Note: This information is only intended as a guide. The optimal dilutions must be determined by the user



RELATED PRODUCTS:

Anti-Caspase-3 Antibody (A1751)
 Anti-Caspase-3 Rabbit Monoclonal Antibody (A1120)
 Cytochrome c Antibody (3352)
 PARP Antibody (Clone 839120) (6659)

FOR RESEARCH USE ONLY! Not to be used on humans.