

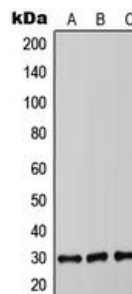
Anti-COMT Antibody

CATALOG NO.: **A2003-100 (100 µl)**

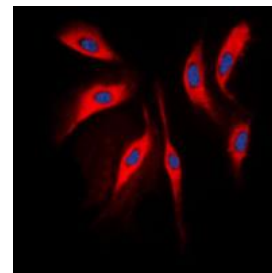
BACKGROUND DESCRIPTION: Catechol-O-methyltransferase catalyzes the transfer of a methyl group from S-adenosylmethionine to catecholamines, including the neurotransmitters dopamine, epinephrine, and norepinephrine. This O-methylation results in one of the major degradative pathways of the catecholamine transmitters. In addition to its role in the metabolism of endogenous substances, COMT is important in the metabolism of catechol drugs used in the treatment of hypertension, asthma, and Parkinson disease. COMT is found in two forms in tissues, a soluble form (S-COMT) and a membrane-bound form (MB-COMT). The differences between S-COMT and MB-COMT reside within the N-termini. Several transcript variants are formed through the use of alternative translation initiation sites and promoters.

ALTERNATE NAMES:	Catechol O-methyltransferase
ANTIBODY TYPE:	Polyclonal
HOST/ISOTYPE:	Rabbit / IgG
IMMUNOGEN:	KLH-conjugated synthetic peptide targeting a sequence within the center region of human COMT
MOLECULAR WEIGHT:	28 kDa
PURIFICATION:	Affinity purified
FORM:	Liquid
FORMULATION:	In 0.42% Potassium phosphate; 0.87% NaCl; pH 7.3; 30% glycerol; and 0.01% sodium azide
SPECIES REACTIVITY:	Human, Mouse, Rat, Monkey
STORAGE CONDITIONS:	Store at -20°C. Avoid freeze / thaw cycles
APPLICATIONS AND USAGE:	WB 1:500 - 1:1000, IF 1:100 - 1:500

Note: This information is only intended as a guide. The optimal dilutions must be determined by the user



Western blot analysis of COMT expression in HEK293T (A); RAW264.7 (B); rat liver (C) whole cell lysates.



Immunofluorescent analysis of COMT staining in RAW264.7 cells. Formalin-fixed cells were permeabilized with 0.1% Triton X-100 in TBS for 5-10 minutes and blocked with 3% BSA-PBS for 30 minutes at RT. Cells were probed with the primary antibody in 3% BSA-PBS and incubated overnight at 4 C in a humidified chamber. Cells were washed with PBST and incubated with a DyLight 594-conjugated secondary antibody (red) in PBS at RT in the dark. DAPI was used to stain the cell nuclei (blue).

RELATED PRODUCTS:

Anti-GOT1 Antibody (A1272)
 Tyrosine Hydroxylase Antibody (3615)
 Anti-GOT2 Antibody (A1273)
 Anti-Dopamine beta-Hydroxylase Antibody (A2002)

FOR RESEARCH USE ONLY! Not to be used on humans.