

Anti-G-CSF Antibody

CATALOG NO.: A1986-100 (100 µl)

BACKGROUND DESCRIPTION: The protein encoded by this gene is a cytokine that controls the production, differentiation, and function of granulocytes. The active protein is found extracellularly. Alternatively spliced transcript variants have been described for this gene.

ALTERNATE NAMES: C17orf33; GCSF; Granulocyte colony-stimulating factor; G-CSF; Pluripoietin; Filgrastim; Lenograstim

ANTIBODY TYPE: Polyclonal

HOST/ISOTYPE: Rabbit / IgG

IMMUNOGEN: KLH-conjugated synthetic peptide targeting a sequence within the center region of human G-CSF

MOLECULAR WEIGHT: 18.8 kDa

PURIFICATION: Affinity purified

FORM: Liquid

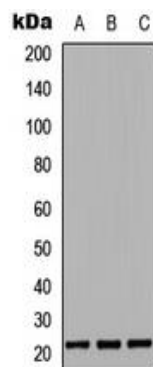
FORMULATION: In 0.42% Potassium phosphate; 0.87% NaCl; pH 7.3; 30% glycerol; and 0.01% sodium azide

SPECIES REACTIVITY: Human, Mouse, Rat

STORAGE CONDITIONS: Store at -20°C. Avoid freeze / thaw cycles

APPLICATIONS AND USAGE: WB 1:500 - 1:1000

Note: This information is only intended as a guide. The optimal dilutions must be determined by the user



Western blot analysis of G-CSF expression in HeLa (A); RAW264.7 (B); PC12 (C) whole cell lysates.

RELATED PRODUCTS:

M-CSF Antibody (5238)
 IL-2 Antibody (5133)
 Anti-IL-16 Antibody (A1413)
 CNTF Antibody (5017)

FOR RESEARCH USE ONLY! Not to be used on humans.