

# Phospho IRF3 (Ser385) Antibody

CATALOG NO.: A1983-100 (100 µl)

**BACKGROUND DESCRIPTION:** This gene encodes a member of the interferon regulatory transcription factor (IRF) family. The encoded protein is found in an inactive cytoplasmic form that upon serine/threonine phosphorylation forms a complex with CREBBP. This complex translocates to the nucleus and activates the transcription of interferons alpha and beta, as well as other interferon-induced genes. Alternatively spliced transcript variants encoding multiple isoforms have been observed for this gene.

**ALTERNATE NAMES:** Interferon regulatory factor 3; IRF-3

**ANTIBODY TYPE:** Polyclonal

**HOST/ISOTYPE:** Rabbit / IgG

**IMMUNOGEN:** KLH-conjugated synthetic peptide targeting a sequence within the C-term region of human IRF3

**MOLECULAR WEIGHT:** 55 kDa

**PURIFICATION:** Affinity purified

**FORM:** Liquid

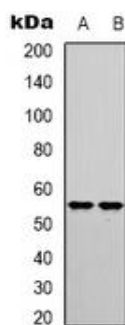
**FORMULATION:** In 0.42% Potassium phosphate; 0.87% NaCl; pH 7.3; 30% glycerol; and 0.01% sodium azide

**SPECIES REACTIVITY:** Human, Mouse, Bovine, Porcine

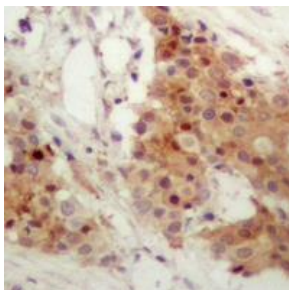
**STORAGE CONDITIONS:** Store at -20°C. Avoid freeze / thaw cycles

**APPLICATIONS AND USAGE:** WB 1:500 - 1:1000, IHC 1:100 - 1:200, IF 1:100 - 1:500

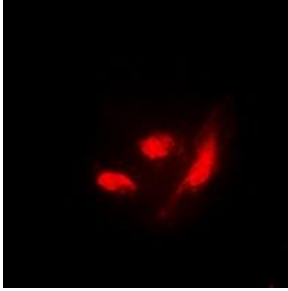
**Note:** This information is only intended as a guide. The optimal dilutions must be determined by the user



Western blot analysis of phospho IRF3 (Ser385) expression in HEK293T (A); HT29 (B) whole cell lysates.



Immunohistochemical analysis of phospho IRF3 (Ser385) staining in human breast cancer formalin fixed paraffin embedded tissue section. The section was pre-treated using heat mediated antigen retrieval with sodium citrate buffer (pH 6.0), then incubated with the antibody at RT and detected using an HRP conjugated compact polymer system. DAB was used as the chromogen. The section was then counterstained with hematoxylin and mounted with DPX.



Immunofluorescent analysis of phospho IRF3 (Ser385) staining in HeLa cells. Formalin-fixed cells were permeabilized with 0.1% Triton X-100 in TBS for 5-10 minutes and blocked with 3% BSA-PBS for 30 minutes at RT. Cells were probed with the primary antibody in 3% BSA-PBS and incubated overnight at 4 C in a humidified chamber. Cells were washed with PBST and incubated with a DyLight 594-conjugated secondary antibody (red) in PBS at RT in the dark. DAPI was used to stain the cell nuclei (blue).

**RELATED PRODUCTS:**

Anti-IL-6 Antibody (A1397)  
Anti-PD-L1 (CD274) (B7-H1), Rabbit Monoclonal Antibody (A1824)  
TLR2 Antibody (Clone BV31-9) (3569)  
IRF3 Antibody (3877)

***FOR RESEARCH USE ONLY! Not to be used on humans.***